

## Valves

### Pneumatically Actuated Valves

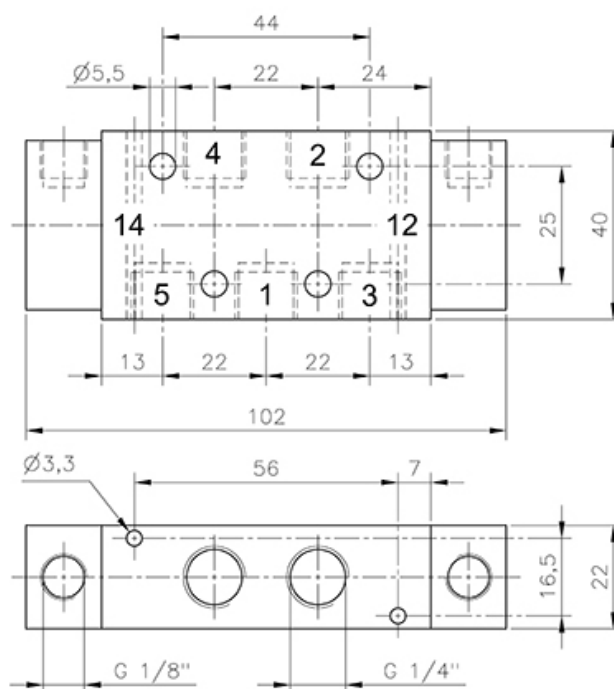
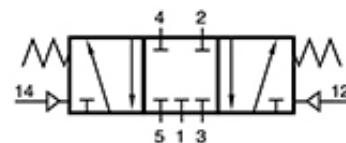
HAFNER

#### 5/3-way valves

#### G-series | In-line valves / valves for manifolds

#### P 531 701 G

Pilot actuated valve | spring return to middle position | centre closed | G-series



**Specifications**

Port size	G 1/4"
Air flow	1250 l/min
Operating pressure	1...10 bar
Actuating pressure	3...10 bar
Size of actuation port	G 1/8"
Function	5/3-way   Centre closed

[www.hafner-pneumatika.com](http://www.hafner-pneumatika.com)