

3/2 - way solenoid valve

Normally closed - direct acting

pneuparts
.com

DN1.5-3

ITEM DESCRIPTION

Functioning

Solenoid Valve 3/2 ways, direct acting,
Normally closed (NC)

Body Material

Brass CW617N

Pipe size

G1/8" - G1/4" - G3/8" - G1/2"

Nominal diameter (DN)

From 1,5mm to 3mm

KV

From 0,05m³/h to 0,32 m³/h

Seal

NBR, FKM, EPDM, PTFE

MOPD Differential pressure

From 0 bar min to 25 bar max

Temperature range

From -10°C to +180°C

Options

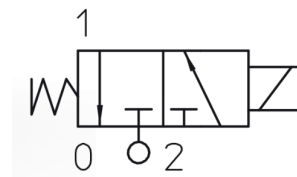
- Manual Override
- Electroless nickel plating
- Degreased for Oxygen use
- *Others on request*

Applications

- Water supply
- Automation and industrial controls
- Industrial and Noble gases Control
- Coffee Machines
- Air and Refrigeration Compressors
- Vacuum
- Industrial Oxygen
- Steam generators
- Ammonia
- Fuel management



PICTOGRAM NC - DIRECT ACTING



pneuparts.com

Florijn 10 b/c
5751 PC, Deurne
Netherlands

+31 (0)493 763 993
sales@pneuparts.com
www.pneuparts.com