

Coolant articulated hose system

Cool-Line 1/4" (NW 6) & 1/2" (NW 12) PN 6

COOLANT ARTICULATED HOSE SYSTEM - Cool-Line 1/4 " (NW 6) PN 6

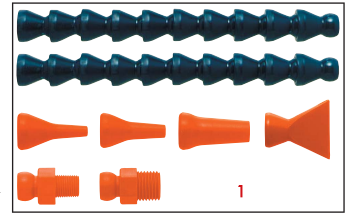
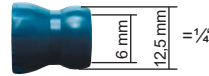
Material: POM

Flow rate: up to 15.4 l/min.z

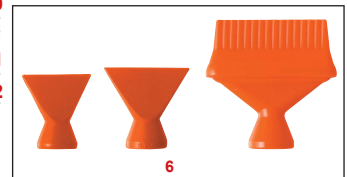
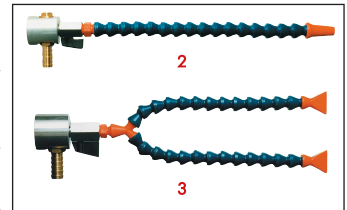
Application: This system is suitable for the passage of petroleum products, coolants, chemicals and dielectric from EDM machines.

Compatible with the systems: Flexoline, Hydra, Kümli, Loc-Line and Ossmann

Partially compatible with the systems: Snaploc, Lubecool, Vario and Maxiflex



| Type | Description | |
|------------|--|----|
| ACHP141 | 2 hose connectors: 2x 140 mm = 280 mmm (2x10 module) 2 threaded connections (1 x R 1/8", 1 x R 1/4") 3 Round connectors (1.6 , 3.2 mm and 6.4 mm) 1 Flat connection 24 mm wide (female) | 1 |
| SMFACH141 | Set with magnetic foot: 1 adjustable coolant hose (16 modules) with threaded piece R 1/4", 1 round nozzle (6,4 mm), 1 magnetic foot with ball valve and 13 mm hose connection | 2 |
| SMFACHT141 | Set with magnetic foot: 2 adjustable coolant hose pieces (13 modules), 2 flat nozzles 24 mm wide (inside) | 3 |
| ACHP140 | Adjustable coolant hose piece 140 mm (10 modules) | |
| TPR18 | Threaded piece, adjustable coolant hose R 1/8" | 4 |
| TPR14 | Threaded piece, adjustable coolant hose R 1/4" | 4 |
| RNWIT16 | Adjustable coolant hose, 1/4", Round nozzle with 1.6 mm Ø (female) | 5 |
| RNWIT32 | Adjustable coolant hose, 1/4", Round nozzle with 3.2 mm Ø (female) | 5 |
| RNWIT64 | Adjustable coolant hose, 1/4", Round nozzle with 6.4 mm Ø (female) | 5 |
| FNW24 | Flat nozzle 24 mm wide (inside) | 6 |
| FNW30 | Flat nozzle 30 mm wide (inside) | 6 |
| FNH16 | Flat nozzle 16 mm wide (inside) | 6 |
| YD141 | Y-distributor | 7 |
| TD141 | T-distributor | 8 |
| EC141 | Elbow connection | 9 |
| SACH141 | Sleeve | 10 |
| SCWACH141 | Shut-off valve on both sides with articulated hose connection | 11 |
| SCWACHT141 | Shut-off valve with articulated hose connection and thread R 1/4" | 11 |
| CVAC141 | Non-return valve for articulated hose | 12 |
| AWFACH141 | Assembly pliers for articulated hose 1/4" | |



COOLANT ARTICULATED HOSE SYSTEM - Cool-Line 1/2 " (NW 6) PN 6

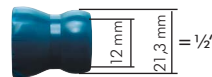
Material: POM

Flow rate: up to 28.8 l/min.

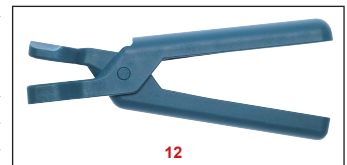
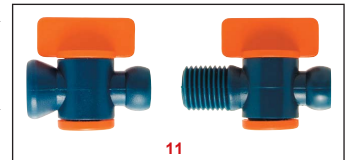
Application: This system is suitable for the passage of petroleum products, coolants, chemicals and dielectric from EDM machines.

Compatible with the systems: Flexoline, Hydra, Kümli, Loc-Line and Ossmann

Partially compatible with the systems: Snaploc, Lubecool, Vario and Maxiflex



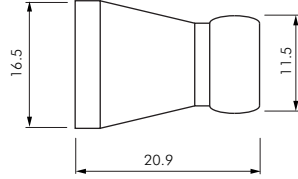
| Type | Description | |
|------------|---|----|
| ACHP121 | 2 Hose connections 2x 130 mm = 260 mm (2 x 5 Module) 2 Threaded connections (1 x R 3/8", 1 x R 1/2") 3 Round connections (6.4 mm, 9.5 mm and 12.7 mm) 1 Flat connection 32 mm wide (in.) | 1 |
| ACHP130 | Adjustable coolant hose piece 140 mm (10 modules) | |
| TPR38 | Threaded piece, adjustable coolant hose R 3/8" | 4 |
| TPR12 | Threaded piece, adjustable coolant hose R 1/2" | 4 |
| RNWI64 | Adjustable coolant hose, 1/2", Round nozzle with 6.4 mm Ø (female) | 5 |
| RNWI95 | Adjustable coolant hose, 1/2", Round nozzle with 9.5 mm Ø (female) | 5 |
| RNWI127 | Adjustable coolant hose, 1/2", Round nozzle with 12.7 mm Ø (female) | 5 |
| FN32 | Adjustable coolant hose, 1/2", Flat nozzle 32 mm wide (female) | 6 |
| FN47 | Adjustable coolant hose, 1/2", Flat nozzle 47 mm wide (female) | 6 |
| FN60 | Adjustable coolant hose, 1/2", Flat nozzle 60 mm wide (female) | 6 |
| YD121 | Y-distributor | 7 |
| TD121 | T-distributor | 8 |
| EC121 | Elbow connection | 9 |
| SL121 | Sleeve | 10 |
| YR121 | Y-Reducer (1 x 1/2" --> 2 x 1/4") | 7 |
| SCWACH121 | Shut-off valve with adjustable coolant hose connection on both sides | 11 |
| SCWACHT121 | Shut-off valve with adjustable coolant hose connection and thread R 1/2" | 11 |
| AWFACH121 | Assembly adjustable coolant hose 1-2 | 12 |



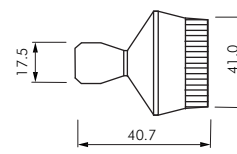
DIMENSIONS

Cool-Line 1/4 "(NW 6)

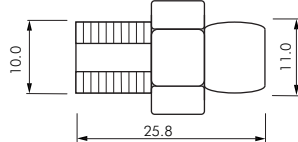
ACHP140



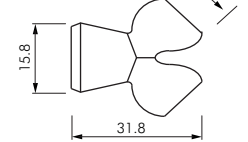
FNH16



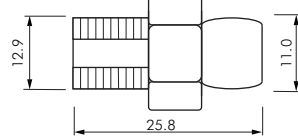
TPR18



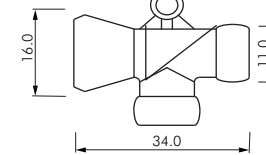
YD141



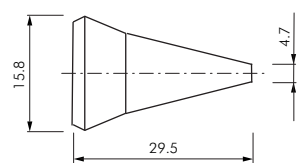
TPR14



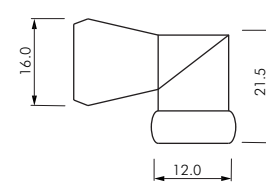
TD141



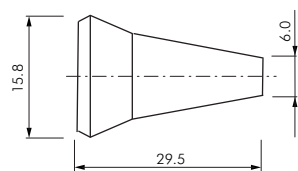
RNWIT16



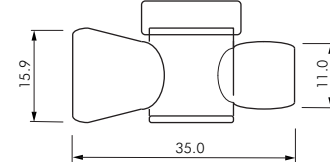
EC141



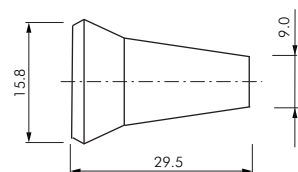
RNWIT32



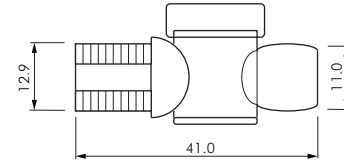
SCWACH141



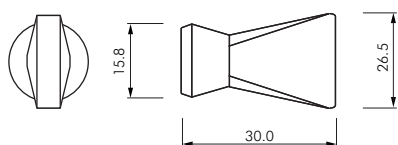
RNWIT64



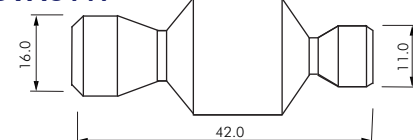
SCWACHT141



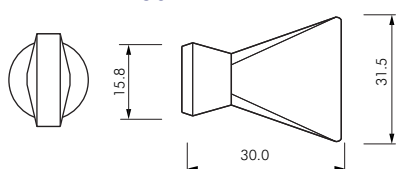
FNW24



CVAC141



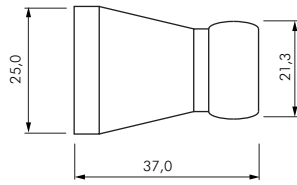
FNW30



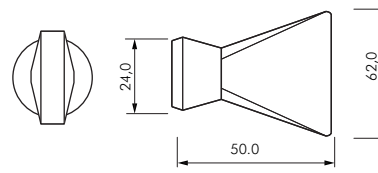
DIMENSIONS

Cool-Line 1/2 "(NW 6)

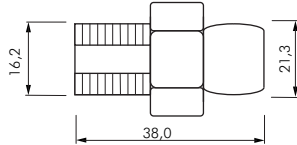
ACHP130



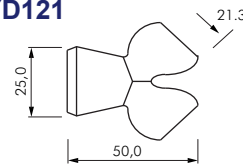
FN60



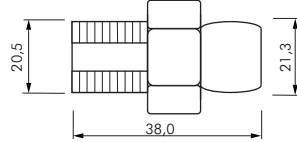
TPR38



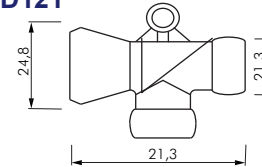
YD121



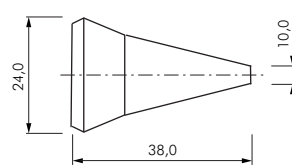
TPR12



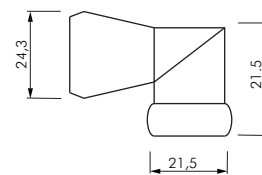
TD121



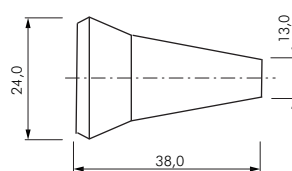
RNWI64



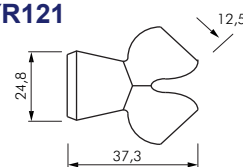
EC121



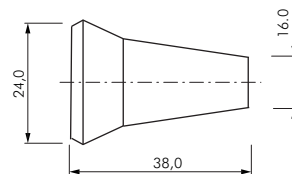
RNWI95



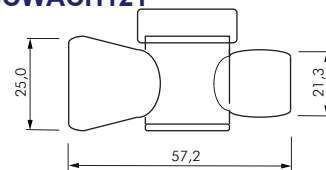
YR121



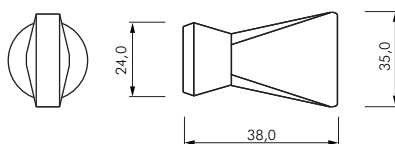
RNWI127



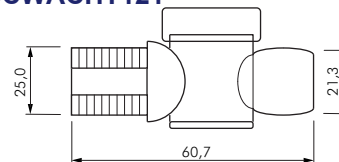
SCWACH121



FN32



SCWACHT121



FN47

