

Festo multiple connection plates for VUVG LK10

Data sheet

Materials

Aluminium

Scope of supply:

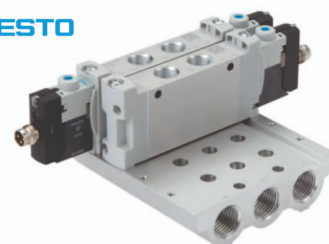
Bottom plate including screws and seals

Hint

Use dummy plates to close off unnecessary connection points. We recommend a P connection list to combine 5/2-way and 3/2 way valves and to use silencer-throttle valves.

* including 2 pieces fixing angle

FESTO



FESTO



Article nr.	Version	Thread	Model	Connections	Description
VABML110S182	Connection plate	6x G 1/8"	LK10	2	Multiple connection plate for LK10 valves with M5 or M7 threads
VABML110S183	Connection plate	6x G 1/8"	LK10	3	Multiple connection plate for LK10 valves with M5 or M7 threads
VABML110S184	Connection plate	6x G 1/8"	LK10	4	Multiple connection plate for LK10 valves with M5 or M7 threads
VABML110S185	Connection plate	6x G 1/8"	LK10	5	Multiple connection plate for LK10 valves with M5 or M7 threads
VABML110S186	Connection plate	6x G 1/8"	LK10	6	Multiple connection plate for LK10 valves with M5 or M7 threads
VABML110S187	Connection plate	6x G 1/8"	LK10	7	Multiple connection plate for LK10 valves with M5 or M7 threads
VABML110S188	Connection plate	6x G 1/8"	LK10	8	Multiple connection plate for LK10 valves with M5 or M7 threads
VABML110S189	Connection plate	6x G 1/8"	LK10	9	Multiple connection plate for LK10 valves with M5 or M7 threads
VABML110S1810	Connection plate	6x G 1/8"	LK10	10	Multiple connection plate for LK10 valves with M5 or M7 threads
VABML110S1812	Connection plate	6x G 1/8"	LK10	12	Multiple connection plate for LK10 valves with M5 or M7 threads
VABML110S1814	Connection plate	6x G 1/8"	LK10	14	Multiple connection plate for LK10 valves with M5 or M7 threads
VABML110S1816	Connection plate	6x G 1/8"	LK10	16	Multiple connection plate for LK10 valves with M5 or M7 threads
VABBL110S	Cover plate	6x G 1/8"	LK10	1	Cover plate for closing off unnecessary connection points
VABDL110XKSM5S	Sealing kit	6x G 1/8"	LK10	1	Sealing set (1 seal incl. 2 screws) for LK10 valves with M7 thread
VABDL110XKSM7S	Sealing kit	6x G 1/8"	LK10	1	Sealing set (1 seal incl. 2 screws) for LK10 valves with M7 thread