

# 2-2 / way solenoid valve

Normally closed - indirect acting

**pneuparts**  
.com

**DN13-50**

## ITEM DESCRIPTION

### Functioning

Solenoid Valve 2/2 ways, indirect Acting, NC

### Body material

Housing: Stainless steel

Seals: FKM, EPDM

### Pipe size

1/2", G 3/4", G 1", G 1 1/4", G 1 1/2" and G 2"

### Nominal diameter (DN)

From 13 mm to 50 mm

### KV

From 3.84 to 40.94l/min

### Temperature range

FKM: -10 °C to +160 °C

EPDM: -10 °C to +160 °C

### Advantages

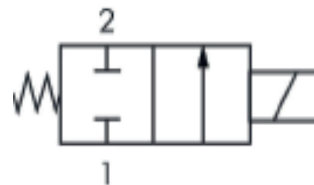
- Solenoid valves open and close very quickly compared to many other types of shut-off valves
- Delivered including coil and connector
- EPDM is suitable for (hot) water, neutral liquids, and many chemicals
- Good environmental protection thanks to IP65 rating

### Disadvantages

- Not suitable for low pressure differences (< 0.5 bar). For low pressure or vacuum, consider a (semi-) direct solenoid valve or another type such as an electric ball valve
- EPDM is not suitable for oils and greases
- Solenoid valves are very sensitive to dirt and can only be used with clean liquids and gases
- Solenoid valves consume energy when activated and the coil can become hot.  
To dissipate heat, proper ventilation of the installation environment is recommended



### PICTOGRAM NC - INDIRECT ACTING



**pneuparts.com**

Florijn 10 b/c  
5751 PC, Deurne  
Netherlands

+31 (0)493 763 993  
sales@pneuparts.com  
www.pneuparts.com