

Pressure regulators

Futura model series 0

1,000 l/min

Version:

Self-relieving (with secondary vent)

Materials:

Body: Grivory® (PA 66), spring hood: POM, diaphragms and seals: NBR

Temperature range:

-10°C to max. +50°C

Input pressure:

Max. 16 bar (model series 0: max 12 bar)

Pressure gauge connection:

G 1/4"

Media:

Oiled and unoled compressed air, neutral gasses

Advantages:

- Automatic venting in the event of overpressure on the secondary side,
- Easy assembly of individual components using coupling kits within a model series,
- Hand wheel can be locked by pressing down on it and bolted with a lock - please use VHS 20.
Model series 0 cannot be locked.

Switch panel thread:

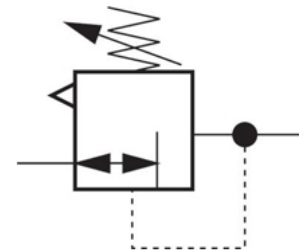
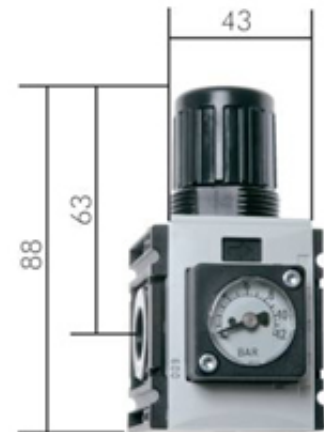
M 30 x 1,5

Scope of delivery:

Pressure regulator including pressure gauge

Flow:

1000 l/min, secondary vent: 25 l/min



Article number	Pressure regulation area	Pressure gauge display	Orifice (DN)	Thread	Version
R0144FB	0.2 - 4 bar	0 - 6 bar	1000 l/min.	G 1/4"	with 40 mm standard pressure gauge
R0144F	0.2 - 4 bar	0 - 6 bar	1000 l/min.	G 1/4"	with compact pressure gauge
R014F	0.5 - 8 bar	0 - 10 bar	1000 L/min.	G 1/4"	with compact pressure gauge
R014FB	0.5 - 8 bar	0 - 10 bar	1000 L/min.	G 1/4"	with 40 mm standard pressure gauge
R01410F	0.5 - 10 bar	0 - 16 bar	1000 L/min.	G 1/4"	with compact pressure gauge
R01410FB	0.5 - 10 bar	0 - 16 bar	1000 L/min.	G 1/4"	with 40 mm standard pressure gauge