

**Electrically operated**

**Manifold, Bistable, low energy**

**SPECIFICATIONS**

**Supplied with solenoid coil and plug**

**Function:**

5-3 way solenoid valve, bistable, manifold

**Materials:**

Housing: Aluminium

Seals: NBR

**Temperature range:**

-5 °C to max. +50 °C

**Operating pressure:**

0.15-0.7 MPa

**Medium:**

Filtered compressed air

**Switching time:**

AC<36ms, DC<23ms

**Port size:**

G 1/8"

**Available voltage range:**

±10%

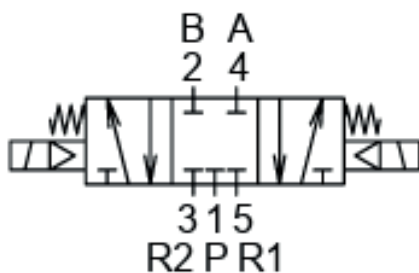
**Insulation class:**

F class

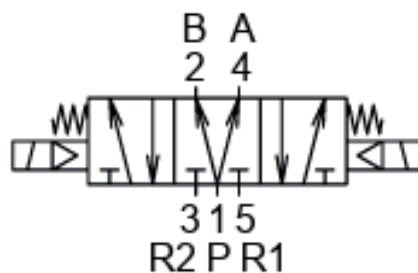
**Symbol:**



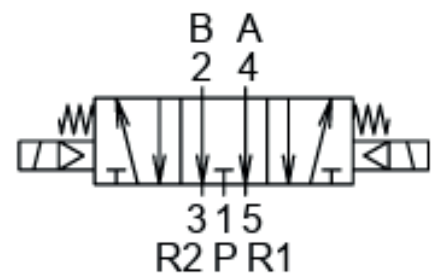
**Closed center**



**Pressure center**



**Exhaust center**



**DIMENSIONS**

**G 1/8"**

