

Elbow one-way flow control

Cylindrical thread

Elbow one-way

Functional principle:

Flow control silencers choke the flow in one direction, while the flow remains unrestricted in the other direction. The standard construction of the flow control silencers is "exhaust air flow controlling". If they are screwed into a cylinder, for example, then they provide for an even flow without causing a slip-stick effect. In the case of cylinders with small volumes (a small diameter/low stroke rate), flow control silencers are utilised with the special "supply air flow controlling" construction.

Compressed air, neutral gases

Materials

Body: nickel-plated brass / PA 66, sleeve: PA 66, seal: NBR, holding claws: stainless steel, cartridge: Zinc-plated ZnDC (only silicone-free seals and lubricants are used during assembly)

Temperature range:

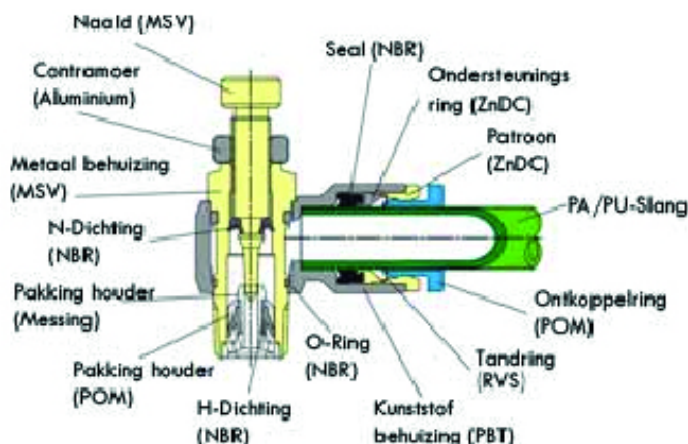
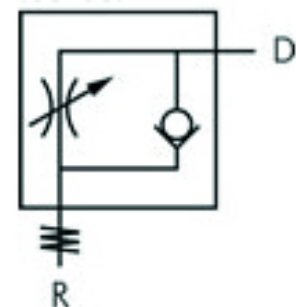
-20°C to max. +80°C

Operating pressure:

-0.95 to 20 bar

Advantages:

Compact design, • Can be easily adjusted without tools



Elbow one-way flow control

Cylindrical thread

Polyamide hose, PA, Extra flex

CODE	D (mm)	Male thread (G)	Weight
GRLBIPSM33	3 mm	M3	7,9 g
GRLBIPSM54	4 mm	M5	8,9 g
GRLBIPS184	4 mm	R 1/8"	18 g
GRLBIPS144	4 mm	R 1/4"	35 g
GRLBIPSM56	6 mm	M5	9,7 g
GRLBIPS186	6 mm	R 1/8"	18 g
GRLBIPS146	6 mm	R 1/4"	35 g
GRLBIPS188	8 mm	R 1/8"	20 g
GRLBIPS148	8 mm	R 1/4"	37 g
GRLBIPS128	8 mm	R 1/2"	100 g
GRLBIPS1410	10 mm	R 1/4"	39 g
GRLBIPS3810	10 mm	R 3/8"	70 g
GRLBIPS1210	10 mm	R 1/2"	100 g
GRLBIPS1412	12 mm	R 1/4"	43 g
GRLBIPS1212	12 mm	R 1/2"	105 g