

## Valves

### Pneumatically Actuated Valves

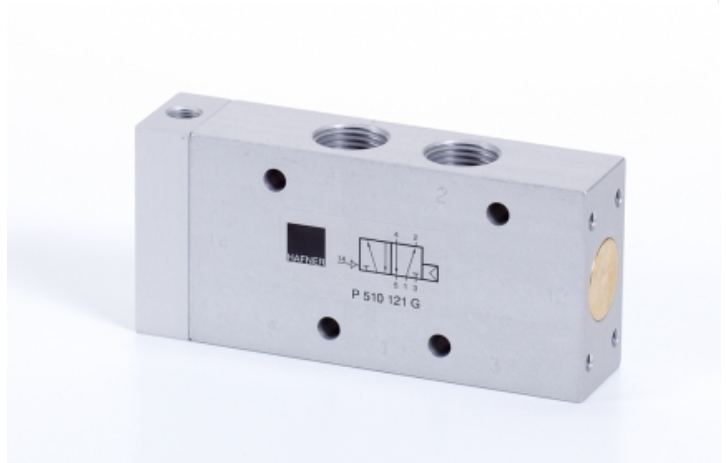
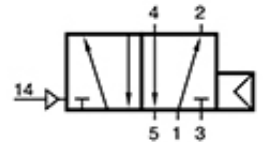
#### 5/2-way valves

#### G-series | In-line valves / valves for manifolds

#### P 510 121 G

Pilot actuated valve | monostable | air spring return |  
G-series

HAFNER



#### Specifications

Port size	G 1/2"
Air flow	3000 l/min
Operating pressure	1...10 bar
Actuating pressure	Same as operating pressure
Size of actuation port	G 1/8"
Function	Single pilot

[www.hafner-pneumatika.com](http://www.hafner-pneumatika.com)