

Coupling plugs

with hose screw connection (PBR)

Plug diameter:

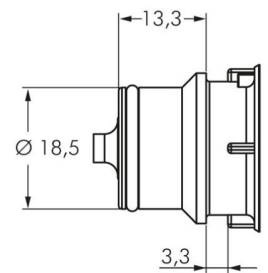
18.5 mm

Flow* air (water):

1200 - 4100 l/min (15- 57 l/min)

Function:

Coupled by plugging the plug into the sleeve until you hear a "click". Pressing the ergonomic plastic release button (protected against accidental unlocking) releases the plug once again. It is possible to combine coupling plugs and coupling sockets with and without a shut-off valve, and made of different materials as desired. The shut-off valve prevents the medium from spilling out when uncoupled.



Article code	Male thread	Material	Version	Workload	Temperature range
LCT9HFPPBA	9.5	PP	With shut-off valve	-0.8 to 4.2	0 to 70°C
LCT9HFPP	9.5	PP	Without shut-off valve	-0.8 to 4.2	0 to 70°C
LTC13HFPPBA	12.7	PP	With shut-off valve	-0.8 to 4.2	0 to 70°C
LCT13HFPP	12.7	PP	Without shut-off valve	-0.8 to 4.2	0 to 70°C
LCT19HFPPBA	19	PP	With shut-off valve	-0.8 to 4.2	0 to 70°C
LCT19HFPP	19	PP	Without shut-off valve	-0.8 to 4.2	0 to 70°C
LCT9HFPSUBA	9.5	Polysulfone	With shut-off valve	-0.8 to 8.6	- 40 to 138°C
LCT9HFPSU	9.5	Polysulfone	Without shut-off valve	-0.8 to 8.6	- 40 to 138°C
LCT13HFPSUBA	12.7	Polysulfone	With shut-off valve	-0.8 to 8.6	- 40 to 138°C
LCT13HFPSU	12.7	Polysulfone	Without shut-off valve	-0.8 to 8.6	- 40 to 138°C
LCT19HFPSUBA	19	Polysulfone	With shut-off valve	-0.8 to 8.6	- 40 to 138°C
LCT19HFPSU	19	Polysulfone	Without shut-off valve	-0.8 to 8.6	- 40 to 138°C

Type Polypropylene

Materials:

Body, valves and release button: Polysulphone (raw material in accordance with FDA), valve springs: Stainless steel AISI 316, seals: EPDM, external spring below push-button: AISI 302, bulkhead nut: Polypropylene, bulkhead seal: EPDM

Temperature range:

-40°C to max. +138°C

Operating pressure:

-0.8 to 8,6 bar (>+90°C observe pressure reductions: +100°C: max. 8,2 bar,+ +110°C: max. 7,8 bar,+ +120°C: max. 7,4 bar,+ +130°C: max. 7,1 bar,+ +138°C: max 6.8 bar)

Media:

Compressed air, water, many acids and alkaline solutions, alcohol, glycol, oxygen**, ozone, many chemicals

Sterilisation possible with:

Formalin, isopropyl alcohol, ethyl alcohol, ethylene oxide, gamma radiation, heating to max. +121°C (uncoupled), autoclaves at max. +121°C (uncoupled)

Operating range:

Compatible with**:

CPC Colder HFC12, CPC Colder HFC35, LinkTech series 60PP, LinkTech series 60PS

Type Polypropylene:

Materials:

Body and valves: polypropylene (raw material in accordance with FDA), valve springs: stainless steel AISI 316, seals: EPDM, bayonet connector: POM (raw material in accordance with FDA), bulkhead nut: nickel-plated brass

Temperature range:

0°C to max. +80°C

Operating pressure:

-0.8 to 8,6 bar (>+90°C observe pressure reductions: +100°C: max. 8,2 bar,+ +110°C: max. 7,8 bar,+ +120°C: max. 7,4 bar,+ +130°C: max. 7,1 bar,+ +138°C: max 6.8 bar)

Sterilisation possible with:

Formalin, isopropyl alcohol, ethyl alcohol, ethylene oxide, gamma radiation, heating to max. +121°C (uncoupled), autoclaves at max. +121°C (uncoupled)

Media:

Compressed air, water, many acids and alkaline solutions, alcohol, glycol, MEK, oxygen**, ozone, carbon dioxide, many chemicals

Operating range:

Suited for use with many chemicals. Not resistant to mineral oils.