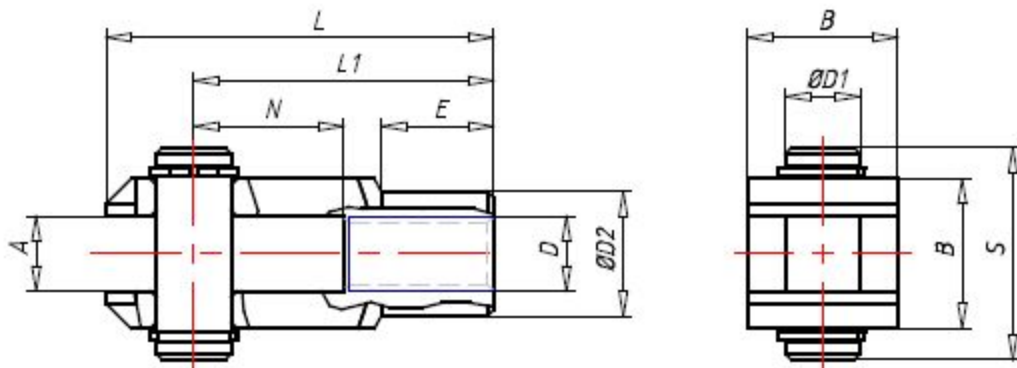


Technical drawings



MAT (Material)	AISI 303 Stainless steel
D (D)	M12X1.25
A (A / mm)	12
B (B / mm)	24
D1 (D1 / mm)	12
S (S / mm)	30
N (N / mm)	24
L1 (L1 / mm)	48
L (L / mm)	62
E (E / mm)	18
D2 (D2 / mm)	20