

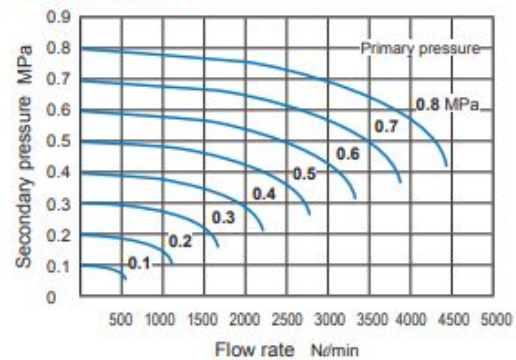


Specification

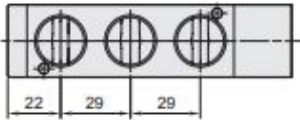
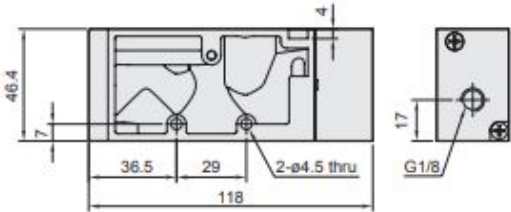
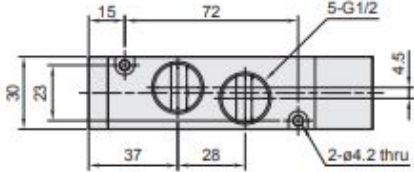
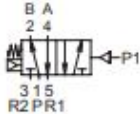
Bore No.	15A				
Port size	G1/2				
No. of port	3	5			
Medium	Air				
Operating pressure range	0~0.8 MPa				
Proof pressure	1 MPa				
Effective orifice	50 mm ²				
Pilot pressure range	(0.34×P*+0.1)~0.8 MPa				
Ambient temperature	-5~+60°C (No freezing)				
Weight	300 g	326 g	275 g	338 g	410 g

* P: Operating pressure.

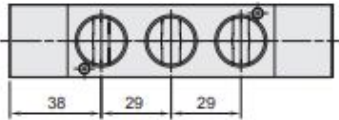
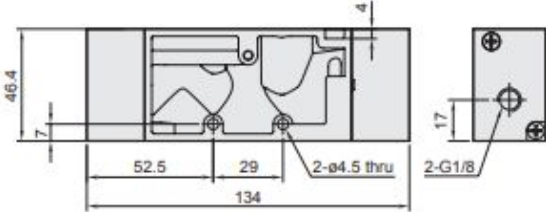
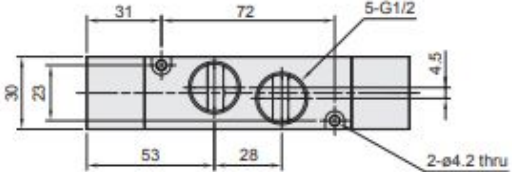
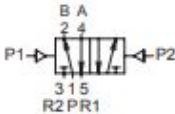
Flow features



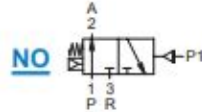
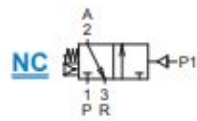
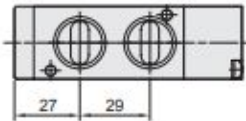
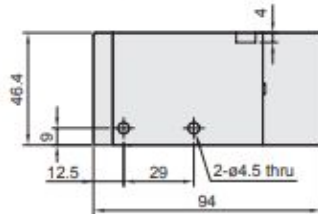
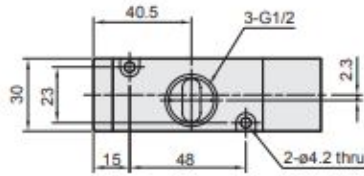
PVM5212



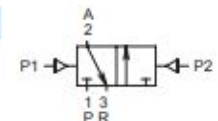
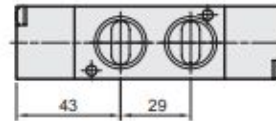
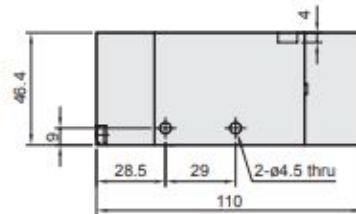
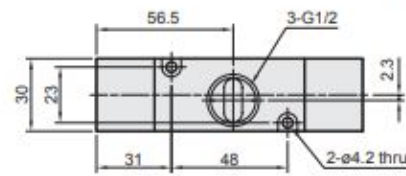
PVB5212



PVM3212 NC/NO

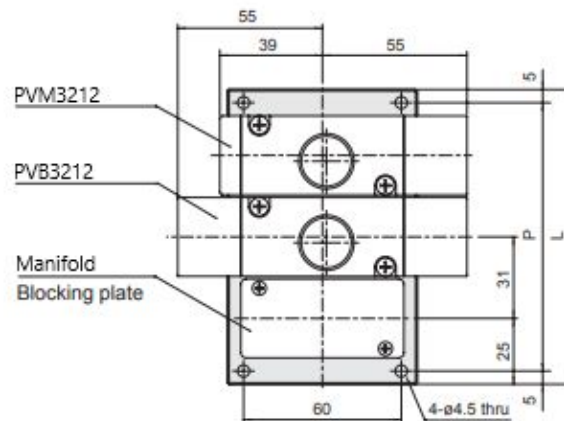


PVB3212



Manifold of pilot valve

3 port (for body ported type)



No. of stations	P	L
2	71	81
3	102	112
4	133	143
5	164	174
6	195	205
7	226	236
8	257	267
9	288	298
10	319	329

