



## Features

- Compact in width and length with precision guidance.
- High lateral loads can be applied on both side and linear bearing unit.
- Magnetic as standard.

## Specification

Acting type	Double acting					
Tube I.D.(mm)	6	12	16	20	25	32
Port size	M5×0.8			Rc1/8		
Medium	Air					
Operating pressure range (MPa)	Max. 0.7					
	Min. 0.15		0.1		0.05	
Proof pressure	1 MPa					
Ambient temperature	-5~+60°C (No freezing)					
Cushion	With rubber cushion pad (both side)					
Available speed range	50~300		50~500 mm/sec			
Lubrication	Not required (If lubrication is used, apply turbine oil NO1 ISO VG32)					

## Table for standard stroke

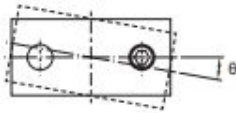
Tube I.D.	Stroke (mm)
ø6	10,20,30,40,50
ø12	10,15,20,25,30,35,40,45,50,60,70,75,80,90,100,110,120,125,150
ø16	10,15,20,25,30,35,40,45,50,60,70,75,80,90,100,110,120,125,150
ø20	10,15,20,25,30,35,40,45,50,60,70,75,80,90,100,110,120,125,150,175,200
ø25	
ø32	

- Stroke out of specification is also available.
- Please consult us if stroke out of specification.
- It is possible to adjust length of basic stroke by 0~5mm.

## Cylinder weight Unit: g

Model	Basic weight	Stroke 5mm
Tube I.D.		
ø6	85.8	7.5
ø12	150	8
ø16	222	13
ø20	376	18
ø25	557	27
ø32	1105	42

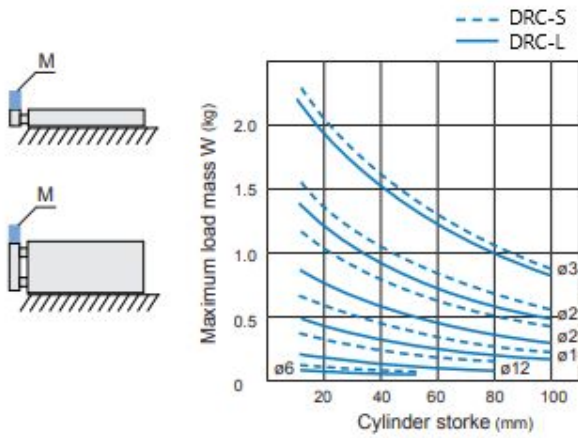
## Anti-roll accuracy



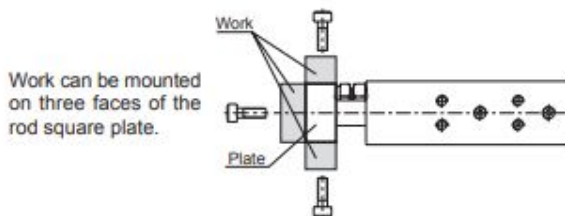
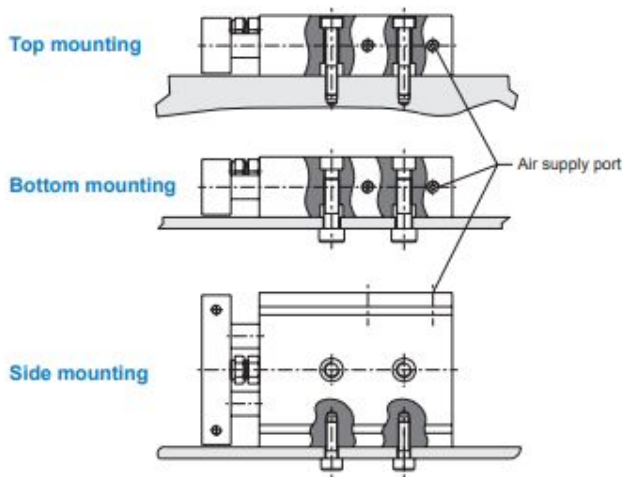
Code Type	$\theta$
DRC..S	$\pm 0.1^\circ$
DRC..L	$\pm 0.15^\circ$

## Maximum load mass

When the cylinder mounted as shown in the diagrams below, the maximum load mass  $W$  should not exceed the values illustrated in the graph.

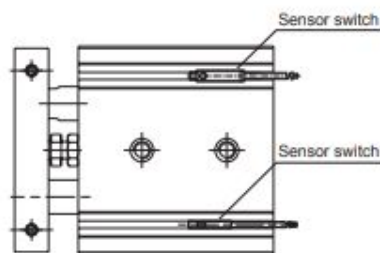
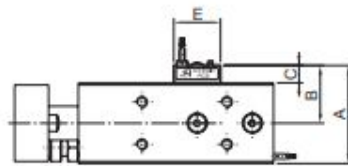
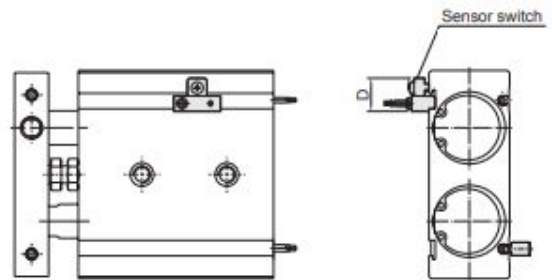


## Mounting methods



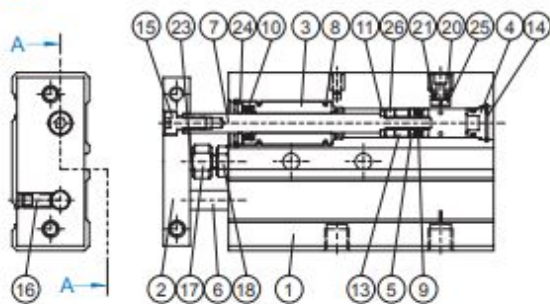
## Installation of sensor switch

### Sensor switch

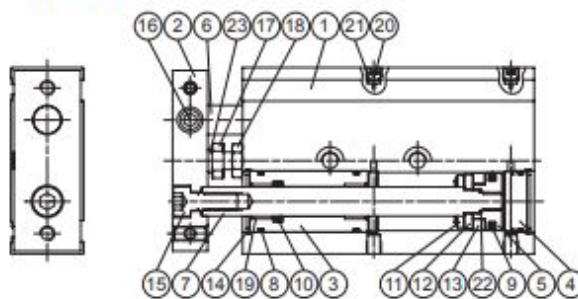


Code Tube I.D.	A	B	C	D	E
12	26.5	17.5	8.5	16	22
16	28.5	18.5	8.5	16	22
20	33.5	21	8.5	16	22
25	38.5	23.5	8.5	16	22
32	46.5	27.5	8.5	16	22

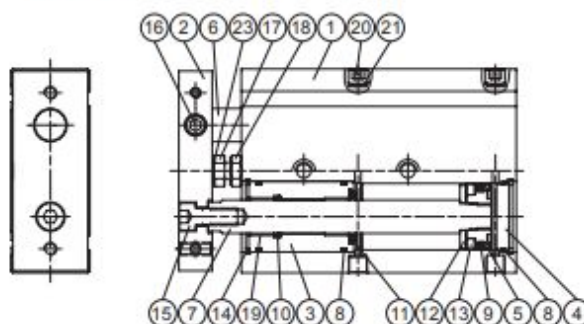
ø6



ø12~ø20



ø25, ø32



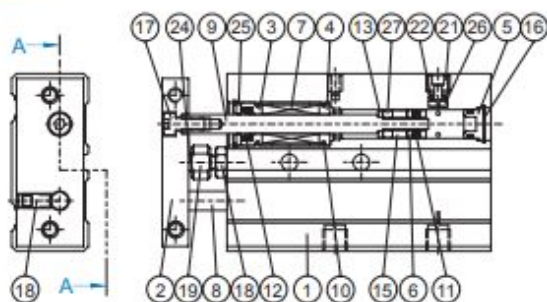
## Material

No.	Part name	Tube I.D.	6	12	16	20	25	32	Note	Q'y	Repair kits (inclusion)	
1	Body		Aluminum alloy								1	
2	Plate		Aluminum alloy								1	
3	Rod cover		Aluminum alloy								2	
4	End cover		Aluminum alloy								2	
5	Piston		Aluminum alloy								2	
6	Piston rod #1		Stainless steel				(*)			1		
7	Piston rod #2		Stainless steel				(*)			1		
8	Cover ring		NBR								6	●
9	Piston packing		NBR								2	●
10	Rod packing		NBR								2	●
11	Rod cushion		NBR								2	●
12	Magnet holder		Stainless steel								2	
13	Magnet ring		Magnet material								2	
14	Snap ring		Spring steel								4	
15	Screw		Stainless steel								1	
16	Set screw		Stainless steel								1	
17	Cushion screw		Stainless steel								1	
18	Nut		Carbon steel								1	
19	Rod bush		Bearing alloy								4	
20	Plug (set screw)		Carbon steel								2	
21	Plug ring		NBR								2	●
22	O-ring		NBR					only ø20			2	●
23	Bumper		PU								1	
24	Rod cover washer		Stainless steel					only ø6		2		
25	Plug gasket		Stainless steel					only ø6		1		
26	Spaced ring		Aluminium					only ø6			2	

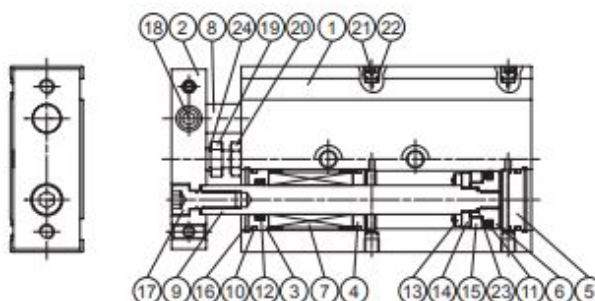
\* Carbon steel



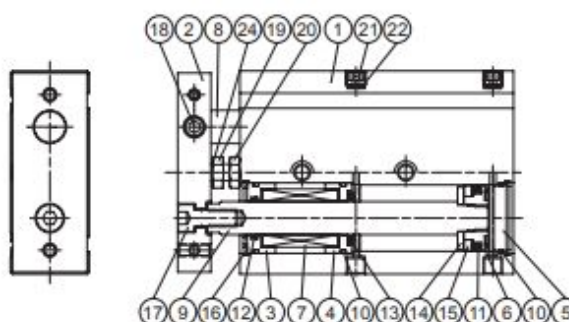
ø6



ø12~ø20



ø25,ø32



## Material

No.	Part name	Tube I.D.	6	12	16	20	25	32	Note	Q'y	Repair kits (inclusion)	
1	Body		Aluminum alloy								1	
2	Plate		Aluminum alloy								1	
3	Rod cover #1		Aluminum alloy								2	
4	Rod cover #2		Aluminum alloy								2	
5	End cover		Aluminum alloy								2	
6	Piston		Aluminum alloy								2	
7	Slide bush		-								2	
8	Piston rod #1		Special steel								1	
9	Piston rod #2		Special steel								1	
10	Cover ring		NBR								6	●
11	Piston packing		NBR								2	●
12	Rod packing		NBR								2	●
13	Rod cushion		NBR								2	●
14	Magnet holder		Stainless steel								2	
15	Magnet ring		Magnet material								2	
16	Snap ring		Spring steel								4	
17	Screw		Stainless steel								1	
18	Set screw		Stainless steel								1	
19	Cushion screw		Stainless steel								1	
20	Nut		Carbon steel								1	
21	Plug(set screw)		Carbon steel								2	
22	Plug ring		NBR								2	●
23	O-ring		NBR						only ø20		2	●
24	Bumper		PU								1	
25	Rod cover washer		Stainless steel						only ø6		2	
26	Plug gasket		Stainless steel						only ø6		1	
27	Spaced ring		Aluminum						only ø6		2	