

Valves

Pneumatically Actuated Valves

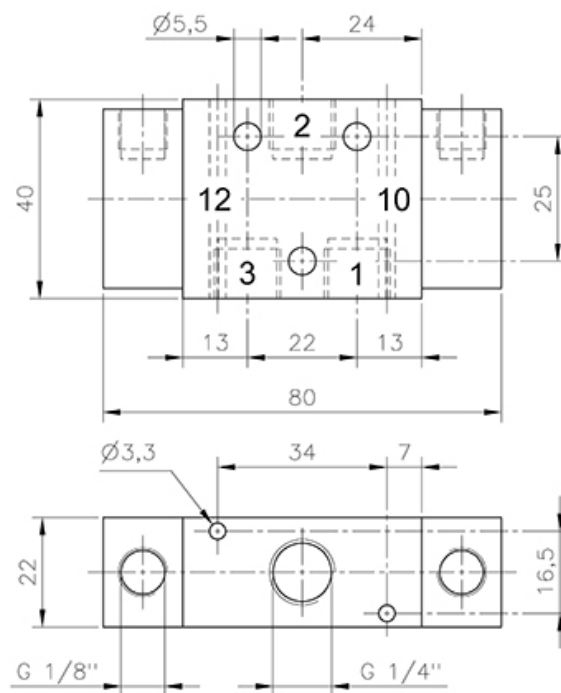
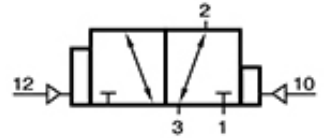
3/2-way valves

G-series | In-line valves / valves for manifolds

P 322 701 G

Pilot actuated valve | bistable | G-series | dominating piston

HAFNER



Specifications

Port size	G 1/4"
Air flow	1250 l/min
Operating pressure	1...10 bar
Actuating pressure	2,5...10 bar
Size of actuation port	G 1/8"
Function	Double pilot dominating at 12

www.hafner-pneumatika.com