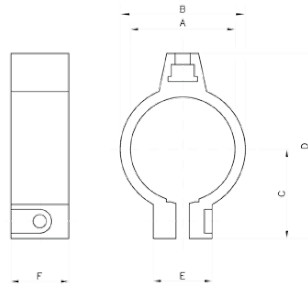


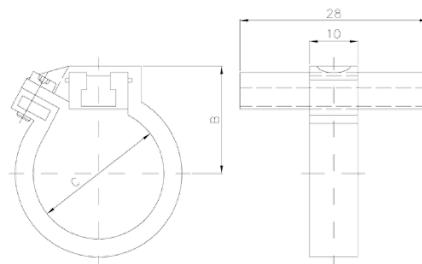
Pneumatic cylinders

Round cylinders ISO 6432 (8 - 25)

Bracket fixings for round cylinders ISO 6432



CODICE/CODE	Ø mm	A	B	C	D	E	F
NT08	8	Ø 9.3	12.3	11.1	23.9	12.3	9
NT10	10	Ø 11.3	14.3	12.2	25.9	12.3	9
NT12	12	Ø 13.3	16.3	13.2	28	12.3	9
NT16	16	Ø 17.3	20.3	15.3	32.1	12.3	9
NT20	20	Ø 21.3	24.3	17.4	36.2	14	9
NT25	25	Ø 26.5	29.5	20	41.4	14	9



CODICE/CODE	Ø mm	B	C
NT32	32	27	33.6
NT40	40	31	41.6
NT50	50	37	52.4
NT63	63	42	65.4