

Body ported

monostable

SPECIFICATIONS

Supplied with solenoid coil and plug

Function:
3/2-way solenoid valve, body ported, monostable

Temperature range:
-5 °C to max. +50 °C

Switching time:
25ms

Operating pressure range:
0.15~0.8 MPa

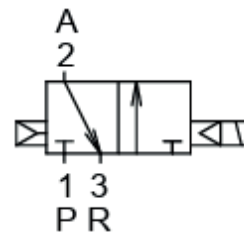
Voltage:
24V DC

Voltage tolerance:
±10%

Insulation class:

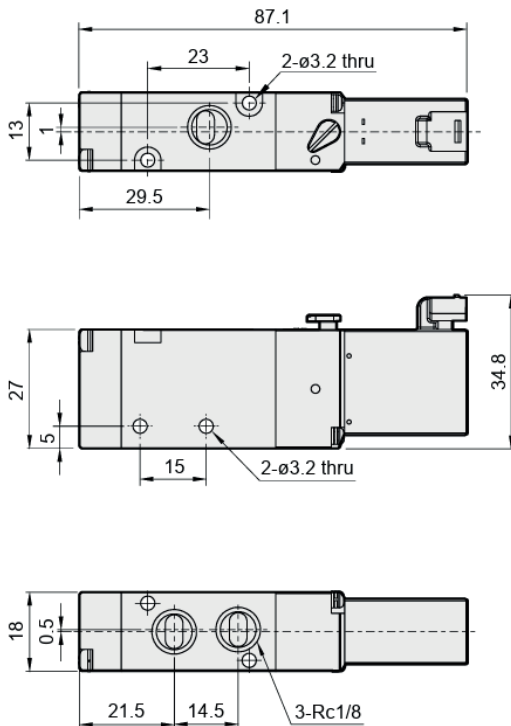


SYMBOL



3/2-way normally closed

DIMENSIONS



CAUTION

Prohibit apply force to coil when tighten the tube fitting.

