

ZUIGNAPPEN
VACUUM CUPS

HOLLE
CONCAVE **VS**



SPECIFICATIES · CHARACTERISTICS

| | | |
|----------------------|-----------------------|-------|
| Ø Onbelast/ Ø Belast | Ø unloaded / Ø loaded | [mm] |
| Minimale buig radius | Minimum curve radius | [mm] |
| Maximale slag | Maximum stroke | [mm] |
| Volume | Volume | [cm³] |
| Gewicht | Weight | [g] |
| Kracht -0,4 bar | Force at -0,4 bar | [Kgf] |
| Kracht -0,6 bar | Force at -0,6 bar | [Kgf] |
| Kracht -0,8 bar | Force at -0,8 bar | [Kgf] |
| Kracht -0,9 bar | Force at -0,9 bar | [Kgf] |

BESTELLEN · HOW TO ORDER

- Nitrile zuignap zonder fitting
Nitrile vacuum cup without fitting
- Silicone zuignap zonder fitting
Silicone vacuum cup without fitting
- Naturel zuignap zonder fitting
Natural rubber vacuum cup without fitting

Standaard fitting deel**
Standard fitting part**

GESCHIKT VOOR
SUITABLE FOR

Horizontale verplaatsing
Horizontal handling

Vlakke oppervlakte
Flat surfaces

Vervormbare materialen
Deformable materials

Ø 20

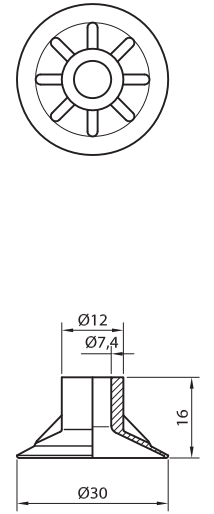
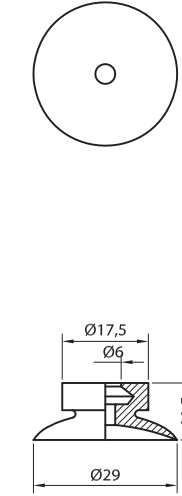
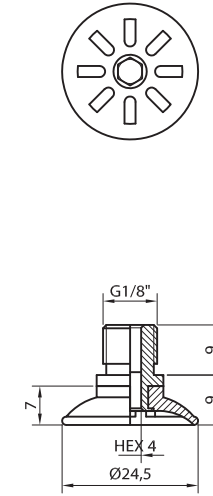
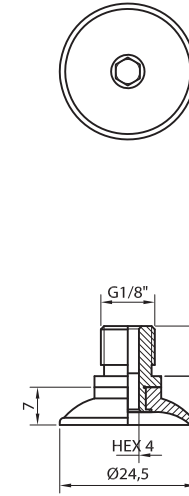
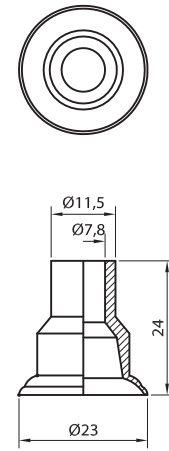
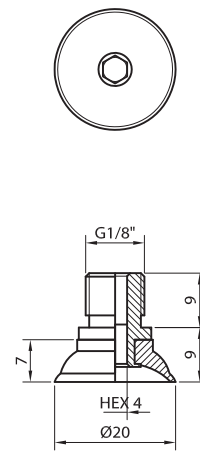
Ø 23

Ø 24,5

Ø 24,5 N

Ø 29

Ø 30



20 / 23

23 / 26

24,5 / 27,5

24,5 / 27

29 / 31

30 / 32,6

| | |
|----------------------|------|
| Minimale buig radius | 15 |
| Maximale slag | 2,5 |
| Volume | 0,63 |
| Gewicht | 1 |
| Kracht -0,4 bar | 1,29 |
| Kracht -0,6 bar | 1,83 |
| Kracht -0,8 bar | 2,29 |
| Kracht -0,9 bar | 2,48 |

VS20NIT

VS23NIT

VS24.5NIT

VSN24.5NIT

VS29NIT

VS30NIT

VS20SB

VS23SB

VS24.5SB

VSN24.5SB

VS29SB

VS30SB

VS20CN

VS23CN

VS24.5CN

VSN24.5CN

VS29CN

VS30CN

RAC90R1/8M

--

RAC90R1/8M

RAC90R1/8M

--

--

ZUIGNAPPEN
VACUUM CUPS

HOLLE
CONCAVE **VS**



SPECIFICATIES · CHARACTERISTICS

| | | |
|----------------------|-----------------------|--------------------|
| Ø Onbelast/ Ø Belast | Ø unloaded / Ø loaded | [mm] |
| Minimale buig radius | Minimum curve radius | [mm] |
| Maximale slag | Maximum stroke | [mm] |
| Volume | Volume | [cm ³] |
| Gewicht | Weight | [g] |
| Kracht -0,4 bar | Force at -0,4 bar | [Kgf] |
| Kracht -0,6 bar | Force at -0,6 bar | [Kgf] |
| Kracht -0,8 bar | Force at -0,8 bar | [Kgf] |
| Kracht -0,9 bar | Force at -0,9 bar | [Kgf] |

BESTELLEN · HOW TO ORDER

- Nitrile zuignap zonder fitting
Nitrile vacuum cup without fitting
- Silicone zuignap zonder fitting
Silicone vacuum cup without fitting
- Naturel zuignap zonder fitting
Natural rubber vacuum cup without fitting

Standaard fitting deel**
Standard fitting part**

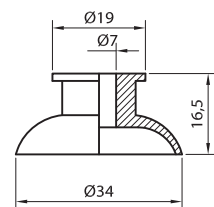
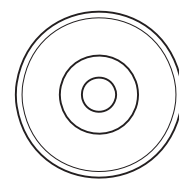
GESCHIKT VOOR
SUITABLE FOR

Horizontale verplaatsing
Horizontal handling

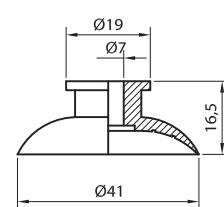
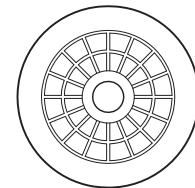
Vlakke oppervlakte
Flat surfaces

Vervormbare materialen
Deformable materials

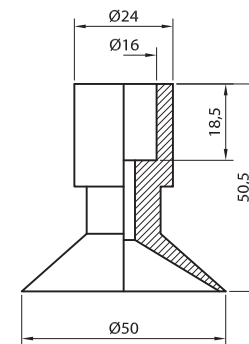
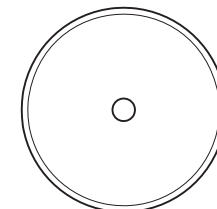
Ø 35



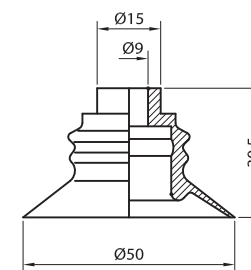
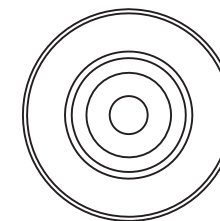
Ø 40



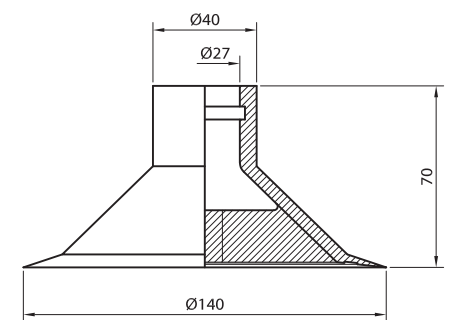
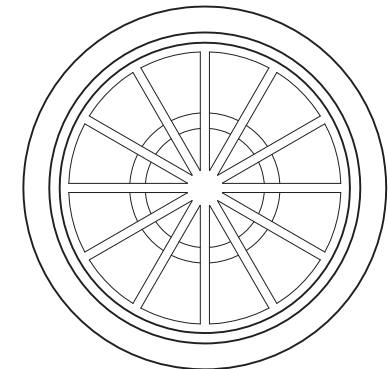
Ø 49



Ø 50



Ø 140



| | | | | |
|---------|-----------|---------|-----------|-----------|
| 34 / 38 | 40 / 45,5 | 50 / 53 | 50 / 52,5 | 140 / 140 |
| 20 | 30 | 25 | 35 | -- |
| 5 | 5 | 6,5 | 4 | -- |
| 3,7 | 5,4 | 12,3 | 12,2 | 143 |
| 4 | 5 | 17 | 8 | 156 |
| 3,39 | 4,69 | 5,33 | 3,73 | 34,8 |
| 4,64 | 6,44 | 6,82 | 4,84 | 42,3 |
| 5,69 | 7,88 | 7,86 | 2,44 | 46 |
| 6,25 | 8,43 | 8,33 | 2,14 | 47,5 |
| VS35NIT | VS40NIT | -- | -- | VS140NNM* |
| VS35SB | VS40SB | -- | -- | -- |
| VS35CN | VS40CN | VS49CN | VS50CN | -- |

* Niet markerend wit nitril Mark free white nitrile