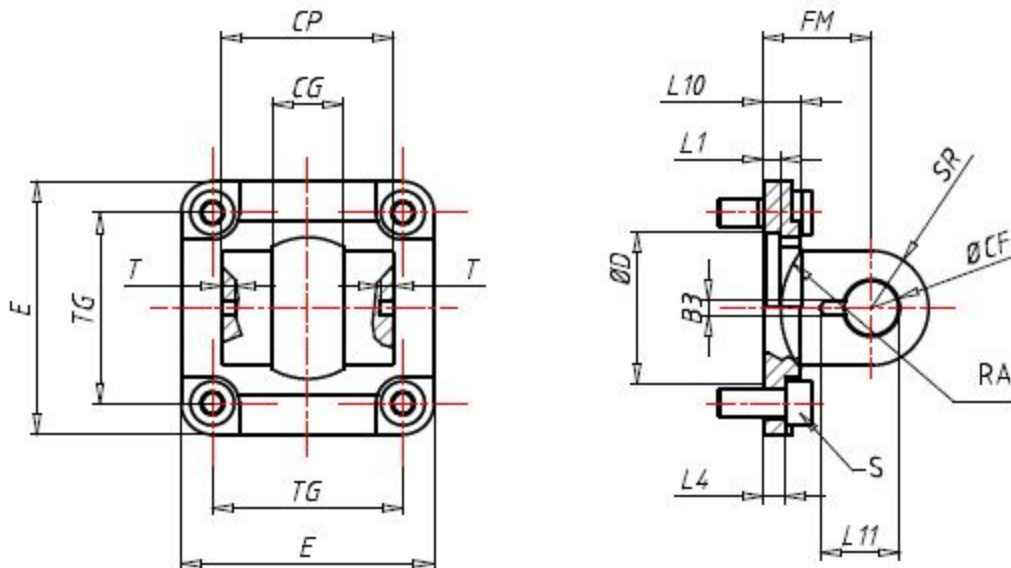


Technical drawings



MAT (Material)	Die casted aluminium body
SUPPC (Supply conditions)	00 - Without screws
PCG (Packaging)	s - single packaging
DI (Ø / mm)	100
E (E / mm)	115
CP (CP / mm)	75
CG (CG / mm)	25
TG (TG / mm)	89
FM (FM / mm)	41
L1 (L1 / mm)	5
L10 (L10 / mm)	14
L4 (L4 / mm)	10
D (ØD / mm)	55
CF (CF / mm)	20
T (T / mm)	4
B3 (B3 / mm)	4.3
L11 (L11 / mm)	27
SR (SR / mm)	21
R4 (R4 / mm)	32
S (S)	M10X25