

# Coupling plugs

with male thread (BPR)

**Plug diameter:**

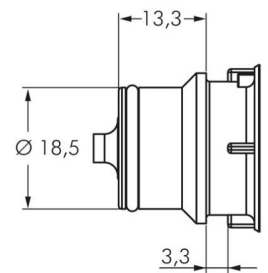
18.5 mm

**Flow\* air (water):**

1200 - 4100 l/min (15- 57 l/min)

**Function:**

Coupled by plugging the plug into the sleeve until you hear a "click". Pressing the ergonomic plastic release button (protected against accidental unlocking) releases the plug once again. It is possible to combine coupling plugs and coupling sockets with and without a shut-off valve, and made of different materials as desired. The shut-off valve prevents the medium from spilling out when uncoupled.



Article code	Male thread	Material	Version	Workload	Temperature range
LTCI38HFPPBANPT	NPT 3/8"	PP	With shut-off valve	-0.8 to 4.2	0 to 70°C
LTCI38HFPPNPT	NPT 3/8"	PP	Without shut-off valve	-0.8 to 4.2	0 to 70°C
LTCI12HFPPBANPT	NPT 1/2"	PP	With shut-off valve	-0.8 to 4.2	0 to 70°C
LTCI12HFPPNPT	NPT 1/2"	PP	Without shut-off valve	-0.8 to 4.2	0 to 70°C
LTCI38HFPSUBANPT	NPT 3/8"	Polysulfone	With shut-off valve	-0.8 to 8.6	- 40 to 138°C
LTCI38HFPSUNPT	NPT 3/8"	Polysulfone	Without shut-off valve	-0.8 to 8.6	- 40 to 138°C
LTCI12HFPSUBANPT	NPT 1/2"	Polysulfone	With shut-off valve	-0.8 to 8.6	- 40 to 138°C
LTCI12HFPSUNPT	NPT 1/2"	Polysulfone	Without shut-off valve	-0.8 to 8.6	- 40 to 138°C

**Type Polypropylene**

**Materials:**

Body, valves and release button: Polysulphone (raw material in accordance with FDA), valve springs: Stainless steel AISI 316, seals: EPDM, external spring below push-button: AISI 302, bulkhead nut: Polypropylene, bulkhead seal: EPDM

**Temperature range:**

-40°C to max. +138°C

**Operating pressure:**

-0.8 to 8,6 bar (>+90°C observe pressure reductions: +100°C: max. 8,2 bar,+ +110°C: max. 7,8 bar,+ +120°C: max. 7,4 bar,+ +130°C: max. 7,1 bar,+ +138°C: max 6.8 bar)

**Media:**

Compressed air, water, many acids and alkaline solutions, alcohol, glycol, oxygen\*\*, ozone, many chemicals

**Sterilisation possible with:**

Formalin, isopropyl alcohol, ethyl alcohol, ethylene oxide, gamma radiation, heating to max. +121°C (uncoupled), autoclaves at max. +121°C (uncoupled)

**Operating range:**

Compatible with\*\*:

CPC Colder HFC12, CPC Colder HFC35, LinkTech series 60PP, LinkTech series 60PS

**Type Polypropylene:**

**Materials:**

Body and valves: polypropylene (raw material in accordance with FDA), valve springs: stainless steel AISI 316, seals: EPDM, bayonet connector: POM (raw material in accordance with FDA), bulkhead nut: nickel-plated brass

**Temperature range:**

0°C to max. +80°C

**Operating pressure:**

-0.8 to 8,6 bar (>+90°C observe pressure reductions: +100°C: max. 8,2 bar,+ +110°C: max. 7,8 bar,+ +120°C: max. 7,4 bar,+ +130°C: max. 7,1 bar,+ +138°C: max 6.8 bar)

**Sterilisation possible with:**

Formalin, isopropyl alcohol, ethyl alcohol, ethylene oxide, gamma radiation, heating to max. +121°C (uncoupled), autoclaves at max. +121°C (uncoupled)

**Media:**

Compressed air, water, many acids and alkaline solutions, alcohol, glycol, MEK, oxygen\*\*, ozone, carbon dioxide, many chemicals

**Operating range:**

Suited for use with many chemicals. Not resistant to mineral oils.