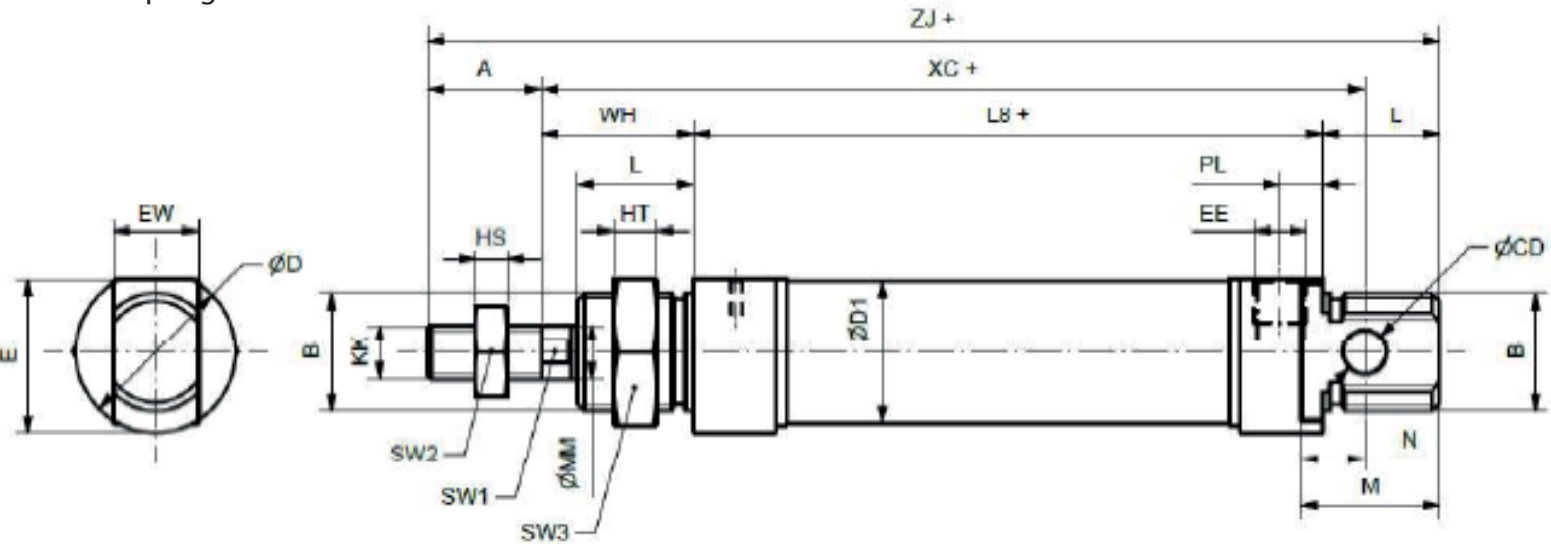


SINGLE ACTING

Front spring

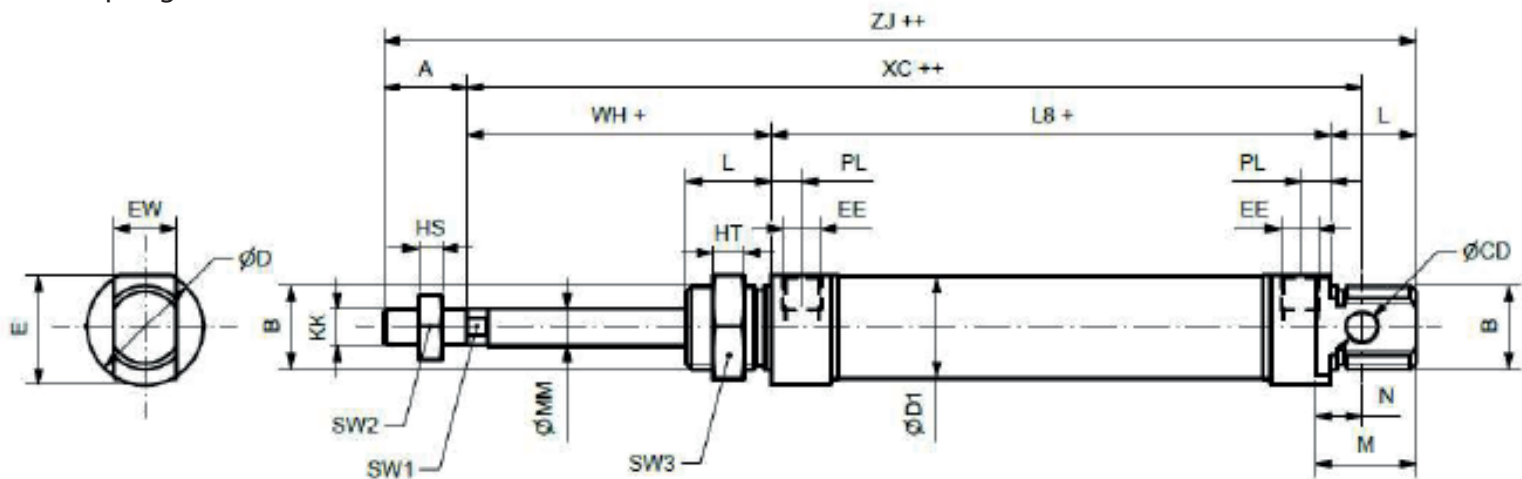


Ø	B	KK	SW1	A	WH	ØMM	L	HS	HT	SW2	SW3	M	PL	EE	ØD1	L8	XC	ZJ	N	ØCD	EW	ØD	E
8	M12x1.25	M4x0.7	-	12	16	4	12	3,2	6	7	19	16	5	M5	9,27	46	64	86	6	4	8	16	15
10	M12x1.25	M4x0.7	-	12	16	4	12	3,2	6	7	19	16	5	M5	11,27	46	64	86	6	4	8	16	15
12	M16x1.5	M6x1	5	16	22	6	18	4	5	10	22	22	5	M5	13,27	48	75	104	9	6	12	19	18
16	M16x1.5	M6x1	5	16	22	6	18	4	5	10	22	20	4.5	M5	17,27	53	82	109	9	6	12	19	18
20	M22x1.5	M8x1.25	7	20	24	8	20	5	8	13	27	28	8	1/8 G	21,27	67	95	131	12	8	16	27	25,5
25	M22x1.5	M10x1.25	9	22	28	10	22	6	8	17	27	26	8	1/8 G	26,5	68	104	140	12	8	16	30	28,5

+ Plus stroke length

SINGLE ACTING

Rear spring



Ø	B	KK	SW1	A	WH	ØMM	L	HS	HT	SW2	SW3	M	PL	EE	ØD1	L8	XC	ZJ	N	ØCD	EW	ØD	E
8	M12x1.25	M4x0.7	-	12	16	4	12	3,2	6	7	19	16	5	M5	9,27	64	82	104	6	4	8	16	15
10	M12x1.25	M4x0.7	-	12	16	4	12	3,2	6	7	19	16	5	M5	11,27	71,5	89,5	111,5	6	4	8	16	15
12	M16x1.5	M6x1	5	16	22	6	18	4	5	10	22	22	5	M5	13,27	70,5	97,5	126,5	9	6	12	19	18
16	M16x1.5	M6x1	5	16	22	6	18	4	5	10	22	20	4.5	M5	17,27	82	111	138	9	6	12	19	18
20	M22x1.5	M8x1.25	7	20	24	8	20	5	8	13	27	28	8	1/8 G	21,27	98,5	126,5	162,5	12	8	16	27	25,5
25	M22x1.5	M10x1.25	9	22	28	10	22	6	8	17	27	26	8	1/8 G	26,5	99,5	135,5	171,5	12	8	16	30	28,5

+ Plus stroke length

+ Plus stroke length x 2