

In-line pressure regulator - Type ILDR ... -

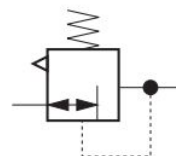
Description: In-Line pressure regulator with factory-set outlet pressure, reducing from e.g. 15 bar to 5 bar. Pressure stability with different flow rates is guaranteed with an outlet pressure tolerance of $\pm 20\%$.

Benefits: Higher safety through lower pressure. Tools and equipment protected against pressure damages.
Cost reduction through substantially reduced air consumption. Longer service life.
Noise reduction for tools.

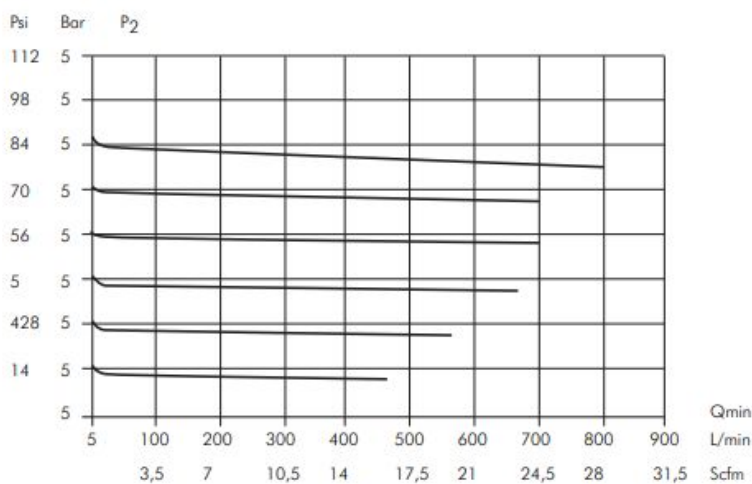
Adjustment: Select the pressure regulator according to the desired outlet pressure. The outlet pressure cannot be subsequently adjusted. This safeguards against tampering.

6.1. Technical data

Type: ILDR ... -
Thread: NPT 1/4"
Max. Pressure: 18 bar
Temperature range: 0°C to max. +60°C
Weight: 0,82 kg



6.3. Flow characteristic



6.4. Dimensions

