

Electrically operated

Body ported, Bistable, low energy

SPECIFICATIONS

Supplied with solenoid coil and plug

Function:

5-3 way solenoid valve, bistable

Materials:

Housing: Aluminium

Seals: NBR

Temperature range:

-5 °C to max. +50 °C

Operating pressure:

0.15-0.7 MPa

Medium:

Filtered compressed air

Switching time:

AC<36ms, DC<23ms

Port size:

G 1/8"

Available voltage range:

±10%

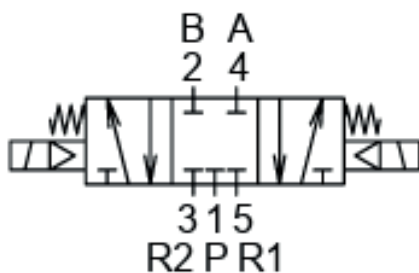
Insulation class:

F class

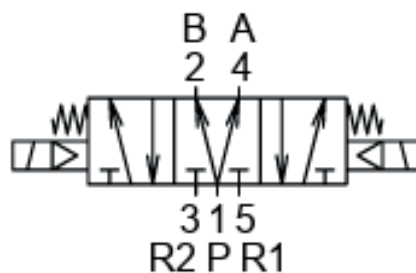
Symbol:



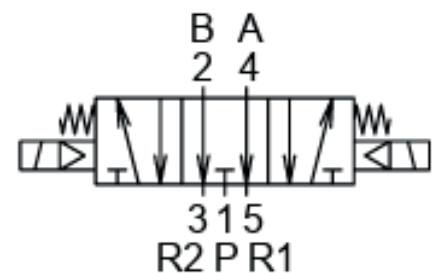
Closed center



Pressure center



Exhaust center



DIMENSIONS

