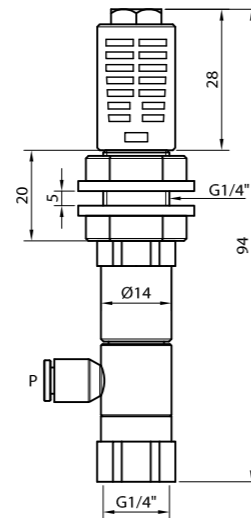


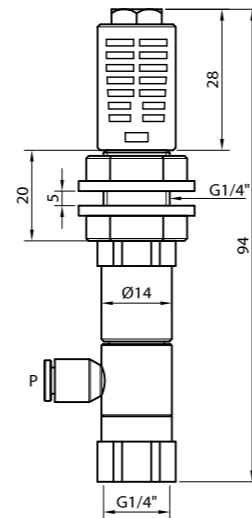
ENKELTRAPS
MONOSTAGE **VST**



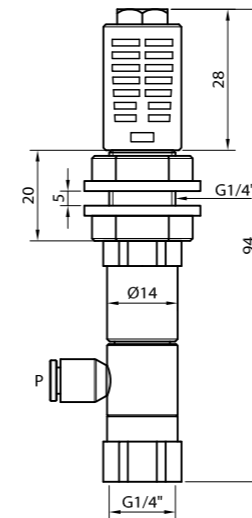
VST 10



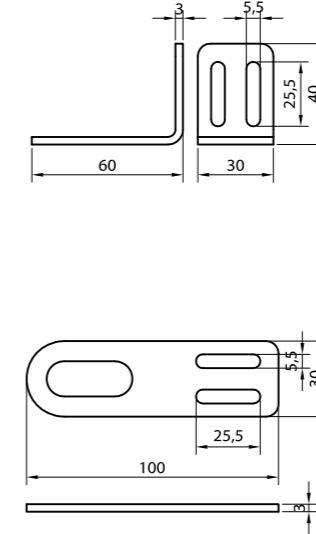
VST 15



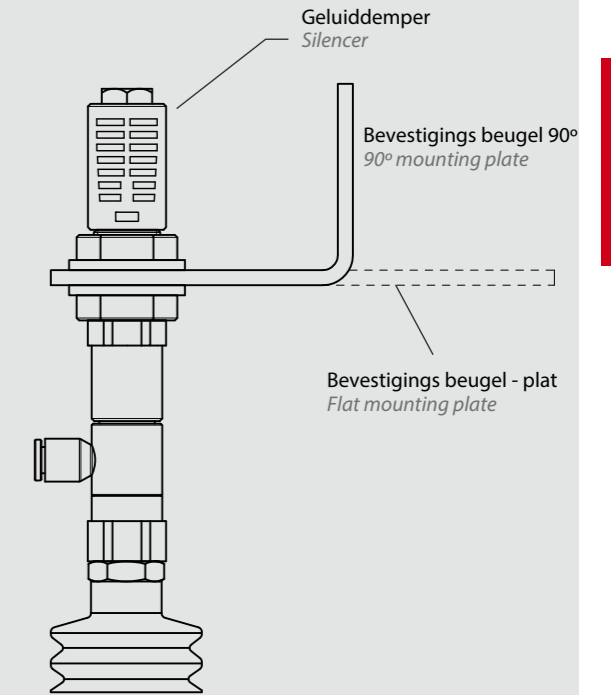
VST 20



BEUGEL BRACKET



BEVESTIGINGS SCHEMA
MOUNTING DIAGRAM



SPECIFICATIES · CHARACTERISTICS

Max vacuum niveau <i>Max vacuum degree</i>	[mbar]
Max. zuigvolume <i>Max suction air flow</i>	[l/min]
Perslucht verbruik <i>Air flow consumption</i>	[l/min]
Werkdruk <i>Supply pressure</i>	[bar]
Geluidsniveau <i>Working noise level</i>	[dB]
Perslucht aansluiting <i>Supply port</i>	
Vacuum aansluiting <i>Vacuum port</i>	
Materialen <i>Materials</i>	
Werk temperatuur <i>Working Temperature</i>	[°C]
Gewicht <i>Weight</i>	[g]

-940	-940
11	15
10,5	14,5
4...8	4...8
70	70
T6	T6
G1/4"	G1/4"
Alu, Messing, Fe Al, brass, Fe	Alu, messing, Fe Al, brass, Fe
-20 ... 70	-20 ... 70
27	27

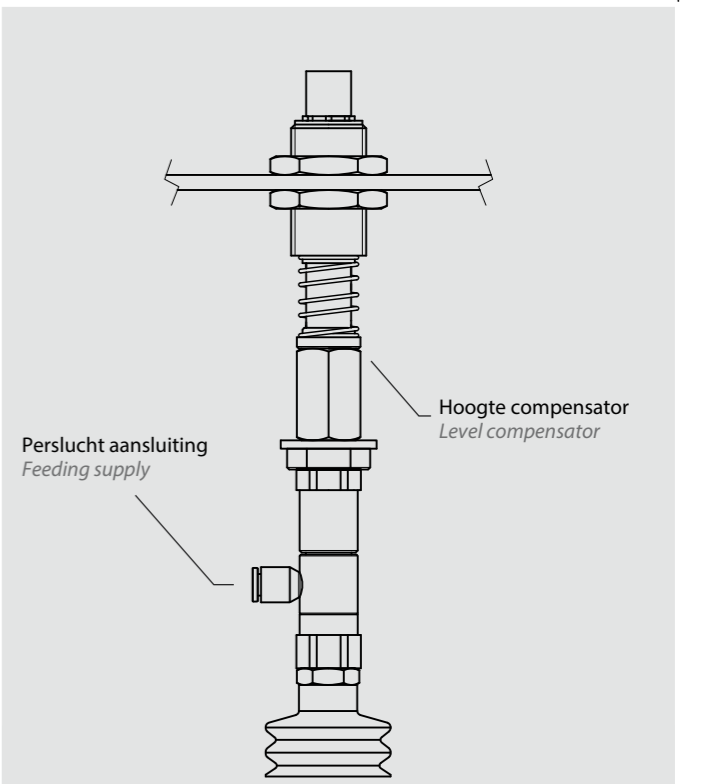
-940	--
20	--
25	--
4...8	--
70	--
T6	--
G1/4"	--
Alu, Messing, Fe Al, brass, Fe	Fe
-20 ... 70	-20 ... 70
27	52

BESTELLEN · HOW TO ORDER

Complete vacuum ejector (excl. zuignap) <i>Complete vacuum ejector</i>
Bevestigings beugel - recht <i>Flat bracket</i>
Bevestigings beugel - 90° <i>Flat bracket 90 degree</i>
Verloop ring G1/4" naar G1/8" female <i>Reducing connector G1/4" to G1/8" female</i>
Geluidsdemper <i>Spare silencer</i>

VST-10	VST-15
--	--
--	--
VR-1418-K-MSV	VR-1418-K-MSV
SIL-18	SIL-18

VST-20	--
--	FBVST
--	FBVST-90
VR-1418-K-MSV	--
SIL-18	--



VST TECHNISCHE INFORMATIE
TECHNICAL DATA

VST 10

VST 15

VST 20

	[mbar]
Vacuum capaciteit* [sec] Evacuation time* [sec]	-100
	-200
	-300
	-400
	-500
	-600
	-700
	-800
-900	

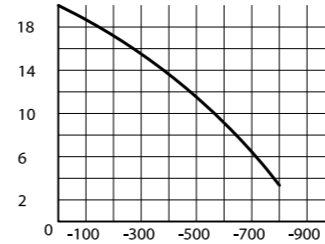
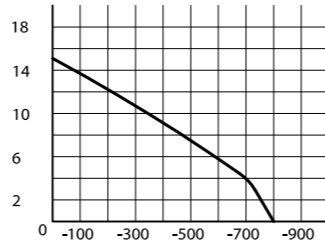
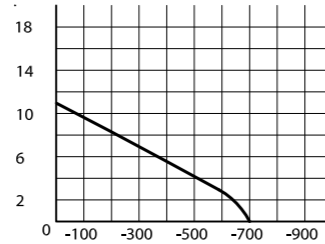
26,9
63,5
110
163
233
339
475
689
1023

7,69
23,1
42,3
61,5
86,5
121
166
238
499

6,73
16,4
30,8
46,2
61,5
88,5
118
174
347

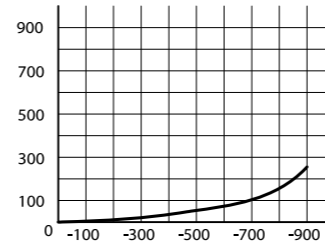
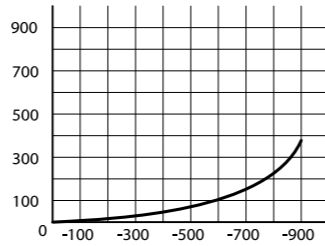
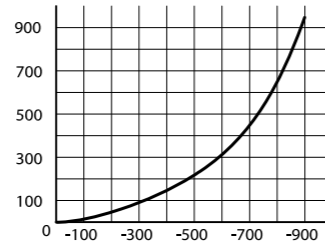
* Gemeten met 25 L tank For 25 L tank

Zuigvolume [NI/min]
Suction flow [NI/min]

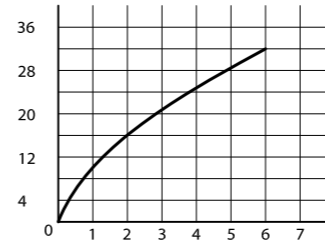
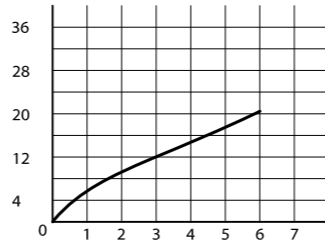
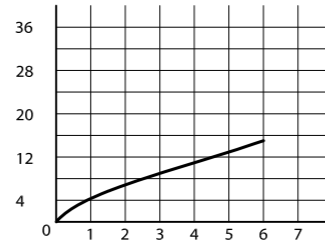


Vacuum niveau [mbar]
Vacuum level [mbar]

Vacuum capaciteit* [sec]
Evacuation time* [sec]

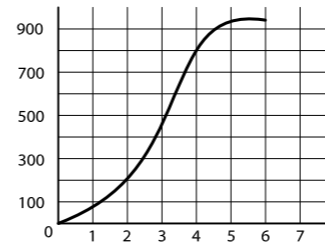
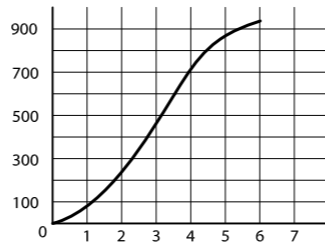
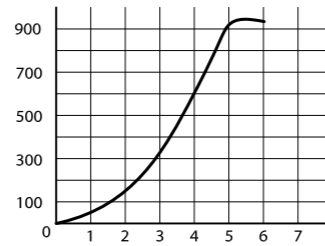


Perslucht verbruik [NI/min]
Air consumption [NI/min]



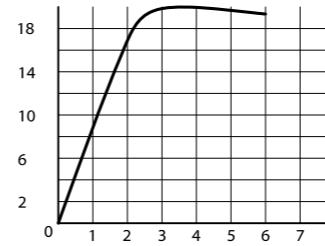
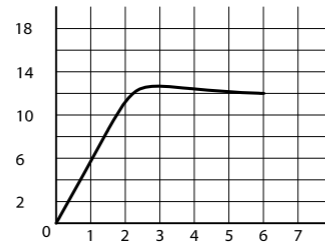
Werkdruk [bar]
Supply pressure [bar]

Vacuum niveau [mbar]
Vacuum level [mbar]



Werkdruk [bar]
Supply pressure [bar]

Zuigvolume [NI/min]
Suction flow [NI/min]



Werkdruk [bar]
Supply pressure [bar]