

# 2/2 - way solenoid valve

Normally closed - direct acting

**pneuparts**  
.com

**DN 2 - 5**

## ITEM DESCRIPTION

### Functioning

Solenoid Valve 2/2 ways, Direct Acting,  
Normally closed (NC)

### Body Material

Brass CW617N

### Pipe size

G1/8", G1/4", G3/8", G1/2"

### Nominal diameter

From 1,2mm to 6,4mm

### KV

From 0,05m<sup>3</sup>/h to 0,64 m<sup>3</sup>/h

### Seal

NBR, FPM, EPDM, PTFE

### MOPD Differential pressure

From 0bar min to 100bar max

### Temperature range

From -10 °C to +180 °C

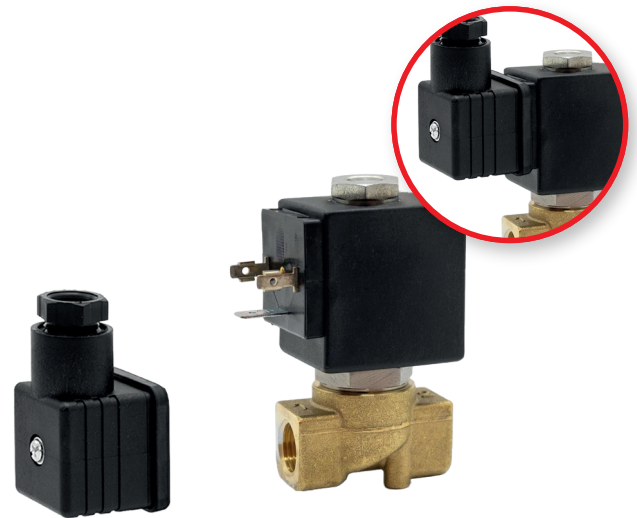
### Options

- Manual Override
- Electroless nickel plating
- Degreased for Oxygen use
- *Others on request*

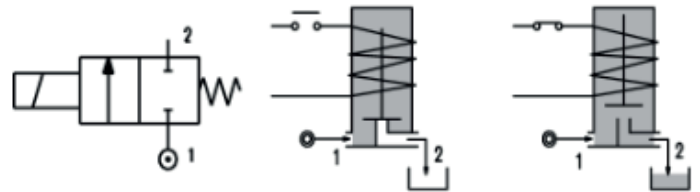
### Applications

- Water supply
- Automation and industrial controls
- Industrial and Noble gases Control
- Coffee Machines
- Air and Refrigeration Compressors
- Plastic moulds temperature control

- Vacuum
- Industrial Oxygen
- Steam generators
- Ammonia
- Fuel management



## PICTOGRAM NC - DIRECT ACTING



**pneuparts.com**

Florijn 10 b/c  
5751 PC, Deurne  
Netherlands

+31 (0)493 763 993  
sales@pneuparts.com  
www.pneuparts.com