

Coupling sockets

with hose screw connection

Plug diameter:

7,8 mm

Flow* air (water):

50 - 500 l/min (0,4 - 6,5 l/min)

Function:

Coupled by plugging the plug into the sleeve until you hear a "click". Pressing the release button (for plastic couplings with a tube connection protected against accidental unlocking) releases the plug once again. It is possible to combine coupling plugs and coupling sockets with and without a shut-off valve, and made of different materials as desired. The shut-off valve prevents the medium from spilling out when uncoupled.

Material:

the coupling plugs are available in three different material types: Chrome-plated brass, Polymer (POM) and Polypropylene (PP)

Hose/tube internal

1.6, 3.2, 7.8 & 6.4 mm

There are two kinds of versions

With shut-off valve

Without shut-off valve

Temperature range:

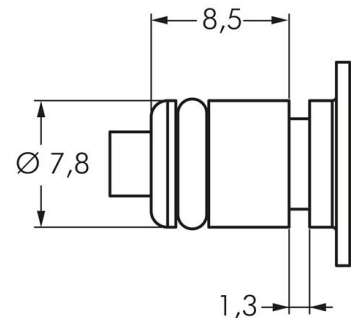
0°C to +70°C

-40°C to +80°C

Workload:

-0.8 to 8.3 bar

-0.8 to 17.3 bar



Type POM:

Materials:

Body and valves: POM (raw material in accordance with FDA), valve springs: Stainless steel AISI 316, seals: NBR, bayonet connector: POM (raw material in accordance with FDA), bulkhead nut: nickel-plated brass.

Temperature range:

-40°C to max. +80°C

Media:

Compressed air, water, alcohol, glycol, mineral oils, petrol, oxygen**, carbon dioxide, mild chemicals

Operating range:

For general applications. High resistance to mineral oils.

Type Polypropylene:

Materials:

Body and valves: polypropylene (raw material in accordance with FDA), valve springs: stainless steel AISI 316, seals: EPDM, bayonet connector: POM (raw material in accordance with FDA), bulkhead nut: nickel-plated brass

Temperature range:

0°C to max. +80°C

Media:

Compressed air, water, many acids and alkaline solutions, alcohol, glycol, MEK, oxygen**, ozone, carbon dioxide, many chemicals

Operating range:

Suited for use with many chemicals. Not resistant to mineral oils.