

# Compressor pump

**24Volt 0.35 KW**

24V compressor

The air compressor pump works with the up and down of a piston in the cylinder. During the down-stroke, ambient air is drawn in through the inlet valve, while the discharge valve remains closed. On the up-stroke of the piston, the air is forced into the compressor tank through the discharge valve and the check valve. Through this controlled action, air is forced into the tank to a preset pressure. The pressure switch regulates the pressure and controls the stop/ start of motor/ Working air is not available until the pressure in the air tank built up. The air inlet filter openings must be kept clear of obstructions.

## Professional | D.C. Oil-less Direct Drive Series

- Oil-less design allows units to be mounted in any orientation.
- Deep cooling fin design on cylinder head and cylinders for high efficiency cooling.
- Oversized motor cooling fan prevent motor from overheating.
- Continuous duty cycle
- Ideal for off-road vehicles, RV, agriculture, construction, motorsports, and applications where on-board air is needed.

## Dimensions

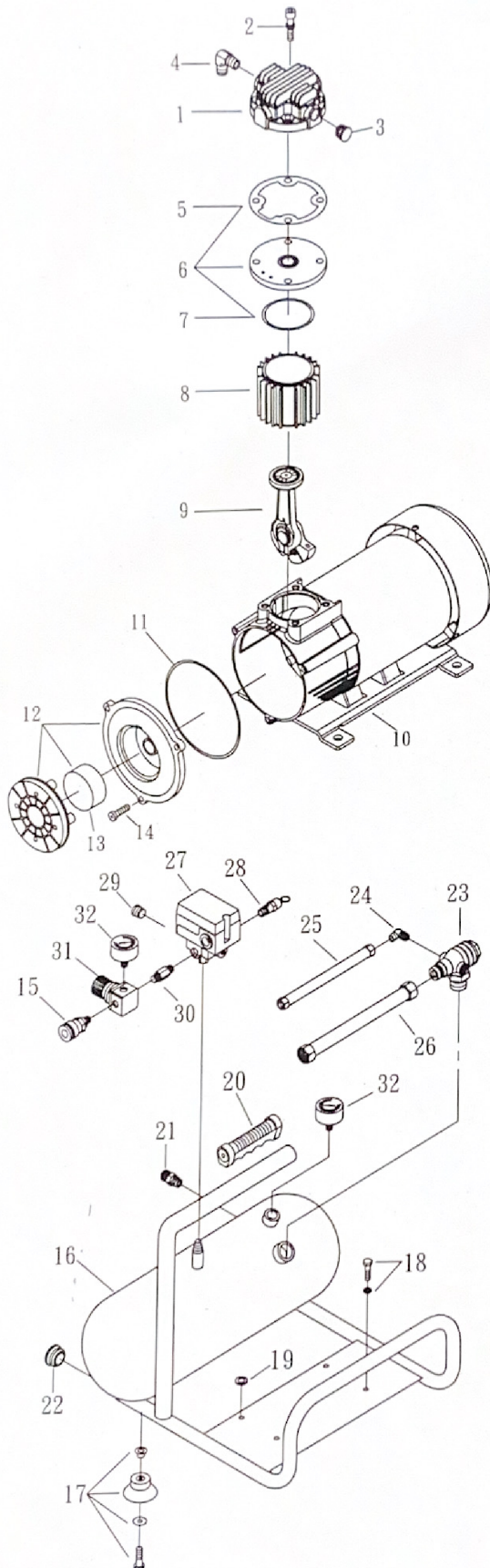
12.2 x 7.5 x 11



Article number	Max. Pressure	Noise level	Voltage	Dimensions	Weight
<b>VDP05024V</b>	9.3 bar	72 dBA	24V	12.2 x 7.5 x 11	8165 g

## SPARE PARTS LIST

NO : 8A-1807



REF. NO.	DESCRIPTION	PART NO.	QTY.
1	Cylinder head	3101107	1
2	Allen bolt set	3B01-M06*080V	4
3	Plug	2B14-ST02E	1
4	Exhaust elbow	2N06-02T03HL	1
5	Cylinder head gasket	2G01-023H	1
6	Exhaust valve seat assembly	3B11-A9000A	1
7	Valve seat gasket	2G03-017	1
8	Cylinder	3201065	1
9	Rod set	3B34-MB57	1
10	Motor set	3B8-DN0524VH	1
11	Filter packing	2G07-009	1
12	Air filter set	2140022	1
13	Filter element	2142014	1
14	Bolt	2B02-FM5*015	3
15	Quick coupler	07S1/4M-E	1
16	Air tank	3401606	1
17	Rubber pad set	3433011-A	4
18	Hexagon bolt set	3B00-FM08*015V	4
19	Body seat block	2439008	4
20	Grip	2432003	1
21	Drain valve	2405012	1
22	Plug	2N32-W05P	2
23	Check valve	2414036X	1
24	Unloading elbow	2N06-01T02H	1
25	Unloading tube set	3B2-02*220F	1
26	Soft tube	2T02-03*0270	1
27	Pressure switch	2E21-A023B	1
28	Pressure relief valve	2406021CE	1
29	Plug	2B14-ST02E	1
30	Nipple	2N01-058RS	1
31	Regulator	2408008RX	1
32	Pressure gauge	2D12-15D14BAR	2