

2/2 - way solenoid valve

Normally open - indirect acting

pneuparts
.com

DN13-50

ITEM DESCRIPTION

Functioning

Solenoid Valve 2/2 ways, Indirect acting,
Normally open (NO)

Body Material

Brass CW617N

Pipe size

G1/4", G3/8", G1/2", G3/4", G1",
G1 1/4", G1 1/2", G2"

Nominal diameter (DN)

From 13mm to 50mm

KV

From 1,5m³/h to 36m³/h

Seal

NBR, FPM, EPDM

MOPD Differential pressure

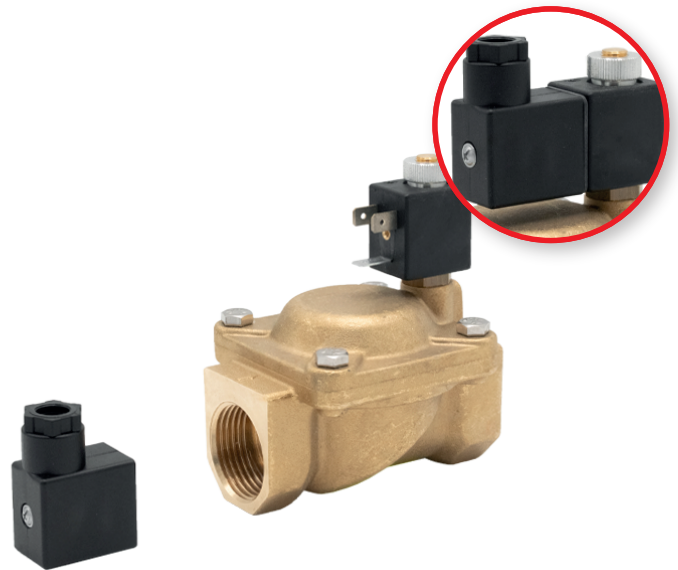
From 0,15 bar min to 16 bar max

Temperature range

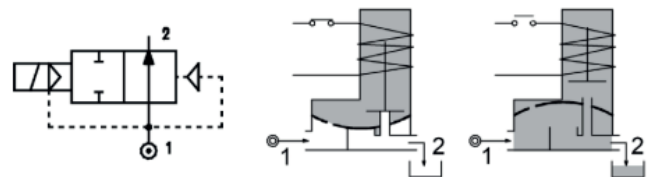
From -10 °C to +160 °C

Applications

- Water Management
- Irrigation
- Air and Gas Management
- Automation and Industrial controls
- Industrial ovens
- Compressors
- Mould Temperature Control
- Light oil management



PICTOGRAM NO - INDIRECT ACTING



pneuparts.com

Florijn 10 b/c
5751 PC, Deurne
Netherlands

+31 (0)493 763 993
sales@pneuparts.com
www.pneuparts.com