

Valves

Pneumatically Actuated Valves

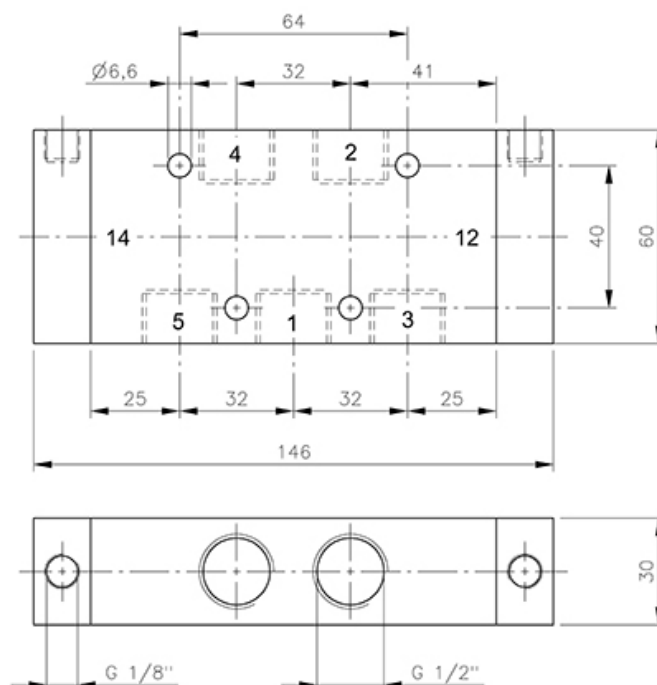
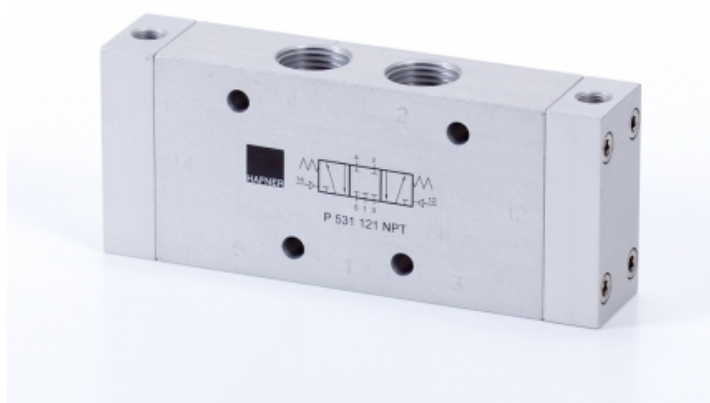
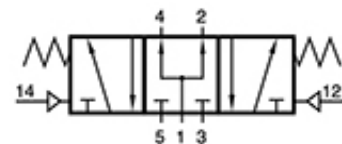
5/3-way valves

In-line valves

P 533 121 NPT

Pilot actuated valve | spring return to middle position | centre pressurised

HAFNER



Specifications

Port size	NPT 1/2"
Air flow	3000 l/min
Operating pressure	1...10 bar
Actuating pressure	3...10 bar
Size of actuation port	NPT 1/8"
Function	5/3-way Centre pressurized

www.hafner-pneumatika.com