

Compressor pump

24Volt 0.35 KW

24V compressor

The air compressor pump works with the up and down of a piston in the cylinder. During the down-stroke, ambient air is drawn in through the inlet valve, while the discharge valve remains closed. On the up-stroke of the piston, the air is forced into the compressor tank through the discharge valve and the check valve. Through this controlled action, air is forced into the tank to a preset pressure. The pressure switch regulates the pressure and controls the stop/ start of motor/ Working air is not available until the pressure in the air tank built up. The air inlet filter openings must be kept clear of obstructions.

Professional | D.C. Oil-less Direct Drive Series

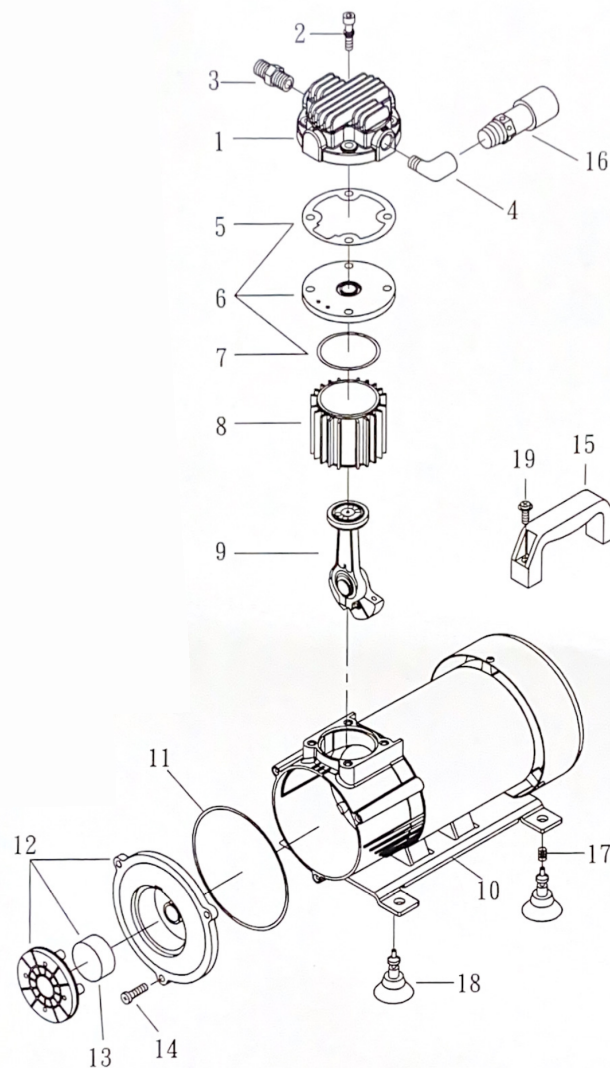
- Oil-less design allows units to be mounted in any orientation.
- Deep cooling fin design on cylinder head and cylinders for high efficiency cooling.
- Oversized motor cooling fan prevent motor from overheating.
- Continuous duty cycle
- Ideal for off-road vehicles, RV, agriculture, construction, motorsports, and applications where on-board air is needed.

Dimensions

12.2 x 7.5 x 11



Article number	Max. Pressure	Noise level	Voltage	Dimensions	Weight
VDP07524V	9.3 bar	78 dBA	24V	12.2 x 7.5 x 11	8618 g



SPARE PARTS LIST

NO : 8A-1807

REF. NO.	DESCRIPTION	PART NO.	QTY.	REF. NO.	DESCRIPTION	PART NO.	QTY.
1	Cylinder head	3101107	1	11	Filter packing	2G07-009	1
2	Allen bolt set	3B01-M06*080V	4	12	Air filter	2140022	1
3	Nipple	2N01-001	1	13	Filter element	2142014	1
4	Exhaust elbow	2N08-02T02TEC	1	14	Bolt	2B02-FM5*015	3
5	Cylinder head gasket	2G01-023H	1	15	Grip	3432028	1
6	Exhaust valve seat set	3B11-A9000A	1	16	Unloading valve	2409106	1
7	Valve seat gasket	2G03-017	1	17	Spring	2S06-001	2
8	Cylinder	3201065	1	18	Rubber pad	2433010	4
9	Rod set	3B34-MB57	1	19	Round head bolt	2B01-M08*016	2
10	Motor set	3B8-DN0724VH	1				