

Pressure boosters

booster without boiler

230 l/min. & 1000 l/min.

Pressure booster

Ideal for delivering a higher pressure than the compressor can deliver.

Standard ratio 1:2 (5 bar input pressure becomes 10 bar)

The ratios 1:3 and 1:4 are available on request.

Example applications:

- Pressurize truck tires.
- Test applications, extort systems.
- Temporary high pressure for cylinders to provide extra power.

It is recommended to use an extra boiler to avoid pressure impulses.

Material

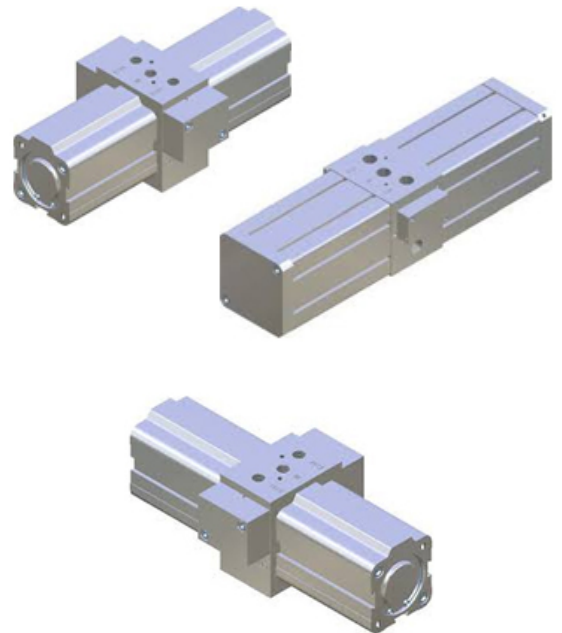
Body caps & pistons: Alluminium, Rod: Chromated steel, Fixing screws: Steel, Valves spools stainless steel & brass, Seals: NBR & polyurethane

Ambient temperature

-20°C to +50°C

ATTENTION this booster does not replace the compressor and is suitable for a short pressure impulse.

With normal use and clean, dry compressed air, the service life is approximately 20,000,000 cycles.



Article number	Flow	Female thread (G)	Maximum pressure	Input pressure	Weight
DVH230	230 l/min	G 1/8"	20 bar	10 bar	1.6 kg
DVH1000	1000 l/min	G 3/8"	20 bar	10 bar	2.8 kg